

The Farnam Building

1600 Farnam St | Omaha, NE | US | Douglas County
Available SF: 17,816 | Sale Price: \$2,945,000



ECONOMIC DEVELOPMENT
PARTNERSHIP



Property and Area Description

RARE opportunity to own the ENTIRE commercial holding of the 1600 Farnam Building! Property boasts the 2.5 story, architecturally stunning , 1918 First National Bank, along with attached parking garage rights, original bank vault area, and cell tower income. THREE main street storefronts include the Green Room, Nerdy Nails, & NEW Restaurant all with long term NNN leases in place!!!

Population



826,043

15 Mile Radius

970,200

30 Mile Radius

1,471,329

60 Mile Radius

Source: ESRI®, 2024

Households



324,837

15 Mile Radius

378,041

30 Mile Radius

580,278

60 Mile Radius

Source: ESRI®, 2024

Building Type:	Retail
Available SF:	17,816
Total SF:	17,816
Year Built:	1917
Sale Price:	\$2,945,000
Last Updated:	Jun 6, 2025

Economic Development Contact

Angie Baber

Greater Omaha Economic Development Partnership
808 ConAgra Drive, Ste 400
Omaha, NE 68102
| ababer@selectgreateromaha.com

Realtor/Owner Contact

Brian Wragge

| brian.wragge@bhhsamb.com

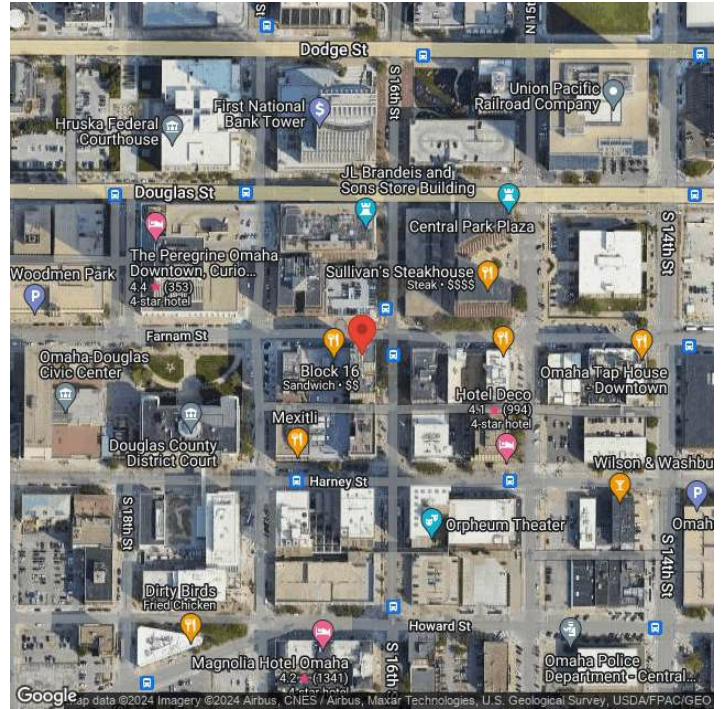
Transportation

Rail Served: No

Rail Accessible: No

Rail Infrastructure in Place: Unknown

Property Images



Angie Baber | Director, Economic Development | Greater Omaha Economic Development Partnership
808 Conagra Dr. | Omaha, NE 68102 | ababer@selectgreateromaha.com