

Gretna Landing

19273 Oakmont Dr, Suite Lot 11 | Gretna, NE | US | Sarpy County
Available SF: 71,438



ECONOMIC DEVELOPMENT
PARTNERSHIP



Property and Area Description

20 minutes to Downtown Omaha Highest Growth Corridor in the Omaha Metro. 192nd Street will be a future connection to 1-80 New HyVee Grocery on the NE corner 1600+ residential lots under development 30-minute drive to Lincoln

Population



Source: ESRI®, 2024

Building Type:	Retail
Available SF:	71,438
Total SF:	71,438
Last Updated:	Jul 4, 2025

Households



Source: ESRI®, 2024

Economic Development Contact

Lisa A. Scheve
Grow Sarpy
808 ConAgra Drive, Ste 400
Omaha, NE 68102
(402) 980-9249 | lscheve@selectgreateromaha.com

Paula Dennison
City of Gretna
<https://www.gretnane.org/Directory.aspx?DID=4>
Gretna, Nebraska 68028
paula@cityofgretna.com

Realtor/Owner Contact

Kirk Hanson

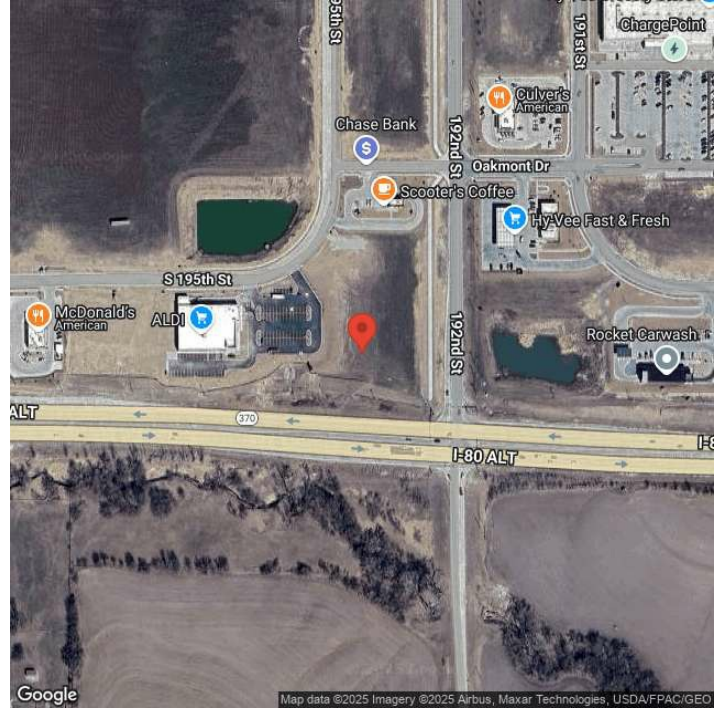
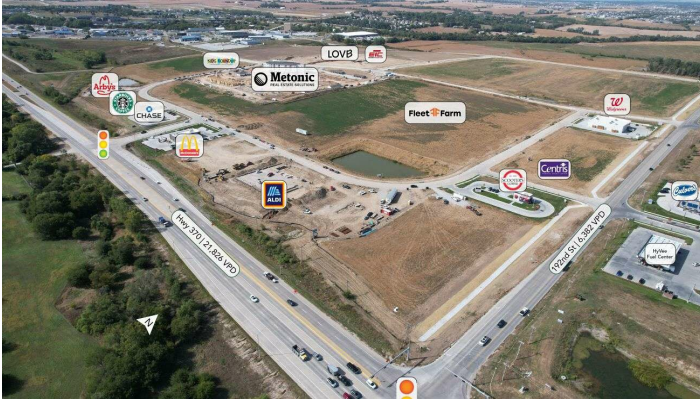
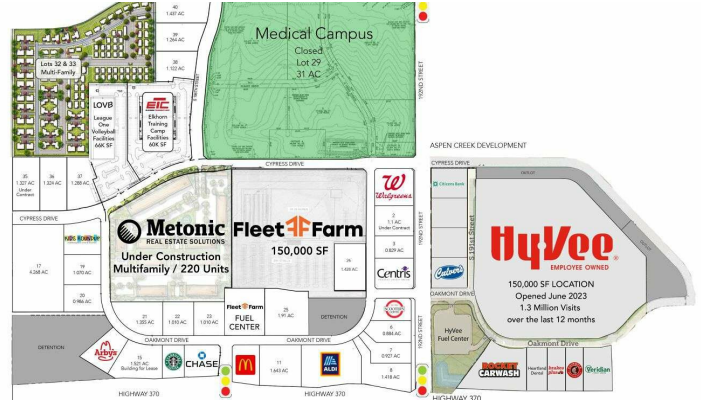
Transportation

Rail Served: No
Rail Accessible: No
Rail Infrastructure in Place: Unknown

Property Images



ADDRESS: 192nd & Hwy 370 | Gretna, NE
LISTING AGENT: Kirk Hanson (C: 402-616-2580)



Angie Baber | Director, Economic Development | Greater Omaha Economic Development Partnership
 808 Conagra Dr. | Omaha, NE 68102 | ababer@selectgreateromaha.com