

1005 Gallup Drive
1005 Gallup Dr, Suite Fourth Floor | Omaha, NE | US | Douglas County
Available SF: 15,896 | **Lease Rate:** \$29



Building Type:	Office
Available SF:	15,896
Total SF:	15,896
Number of Stories:	4
Zoning:	MU
Year Built:	2009
Lease Rate:	\$29
Last Updated:	Aug 1, 2025

Economic Development Contact

Angie Baber
Greater Omaha Economic Development Partnership
808 ConAgra Drive, Ste 400`
Omaha, NE 68102
| ababer@selectgreateromaha.com

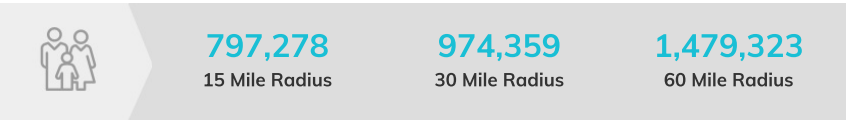
Realtor/Owner Contact

JJ Boulay

Property and Area Description

1005 Gallup Drive is a 96,400 SF mixed use four story open concept Class A office building built in 2009. With floor plans ranging from 15,896 SF to +/-27,364 SF and host to a roof-level green space accessible on the fourth floor, this space perfect for any business that is ready to make an impression.

Population



Source: ESRI®, 2024

Households

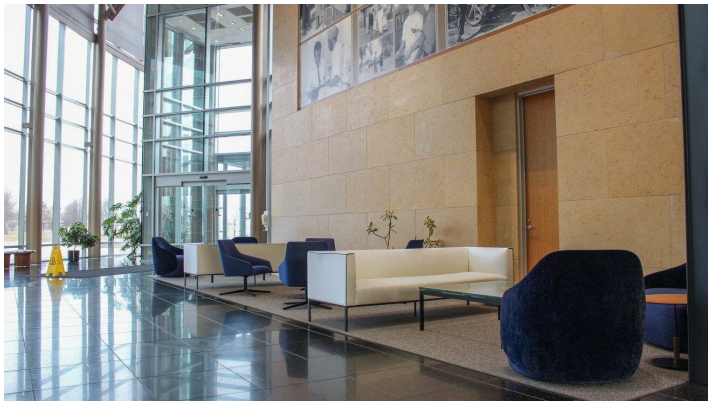
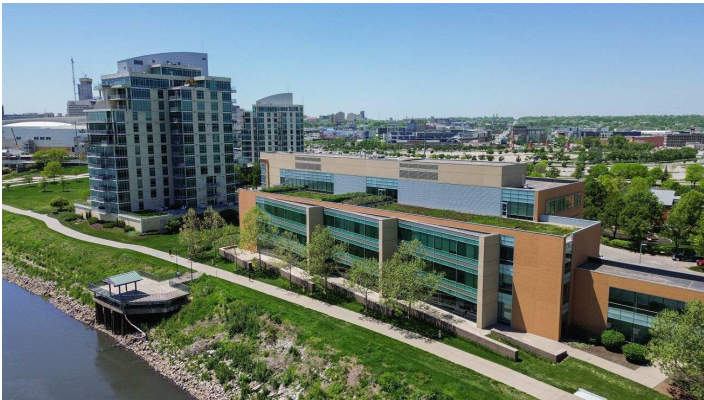
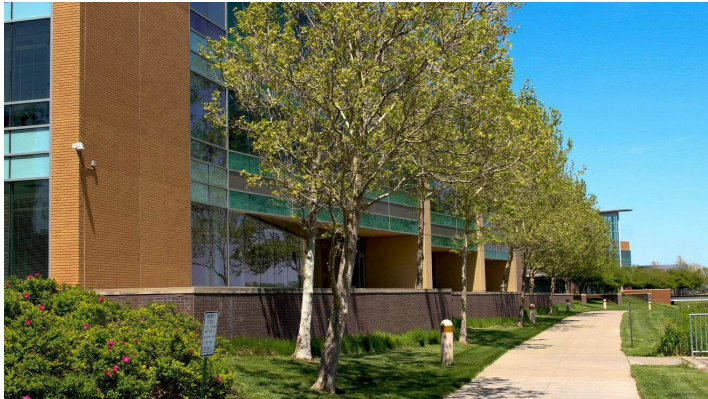


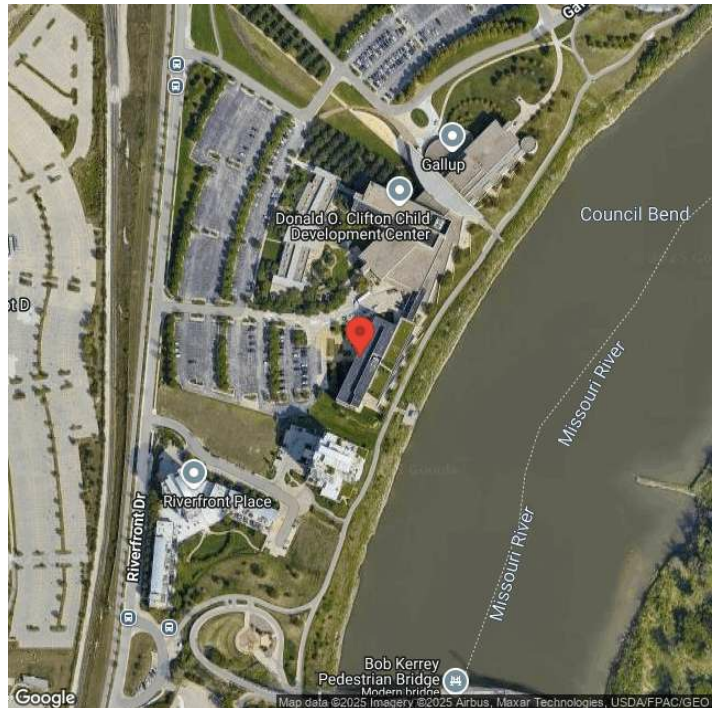
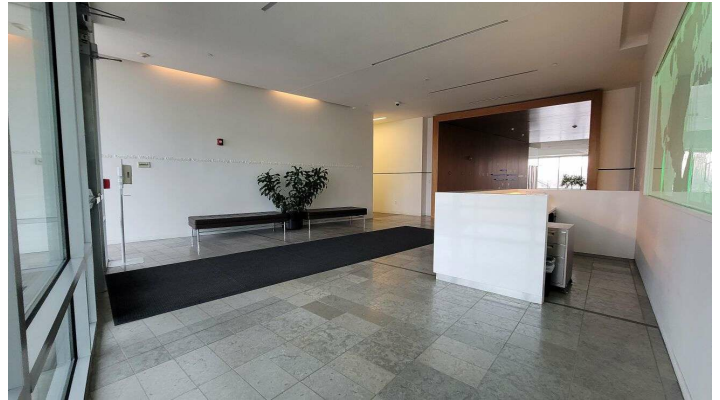
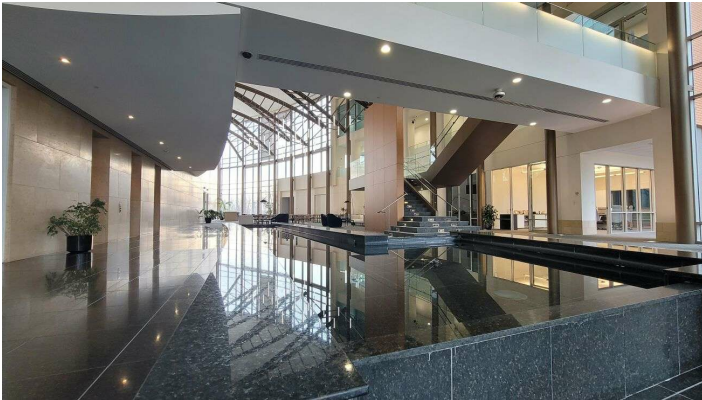
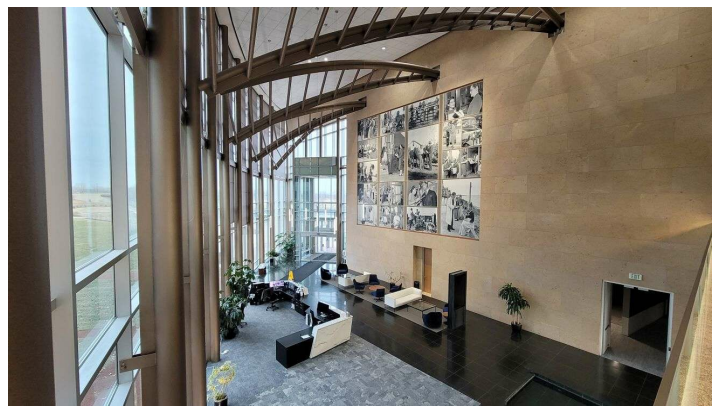
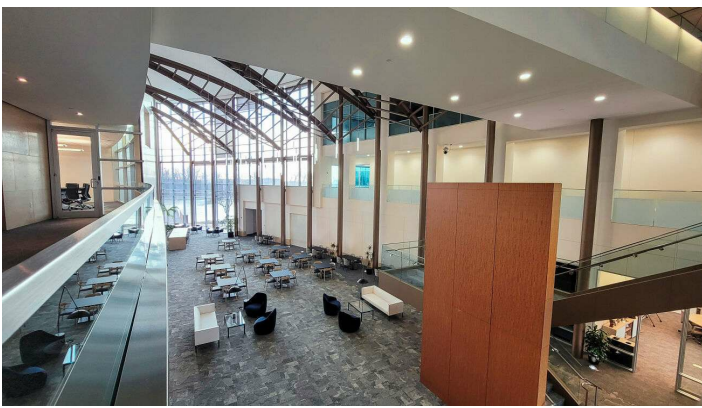
Source: ESRI®, 2024

Transportation

Rail Served: No
Rail Accessible: No
Rail Infrastructure in Place: Unknown

Property Images





Angie Baber | Director, Economic Development | Greater Omaha Economic Development Partnership
808 Conagra Dr. | Omaha, NE 68102 | ababer@selectgreateromaha.com