

2002 N 16th St | Omaha, NE | US | Douglas County  
**Available SF:** 58,600



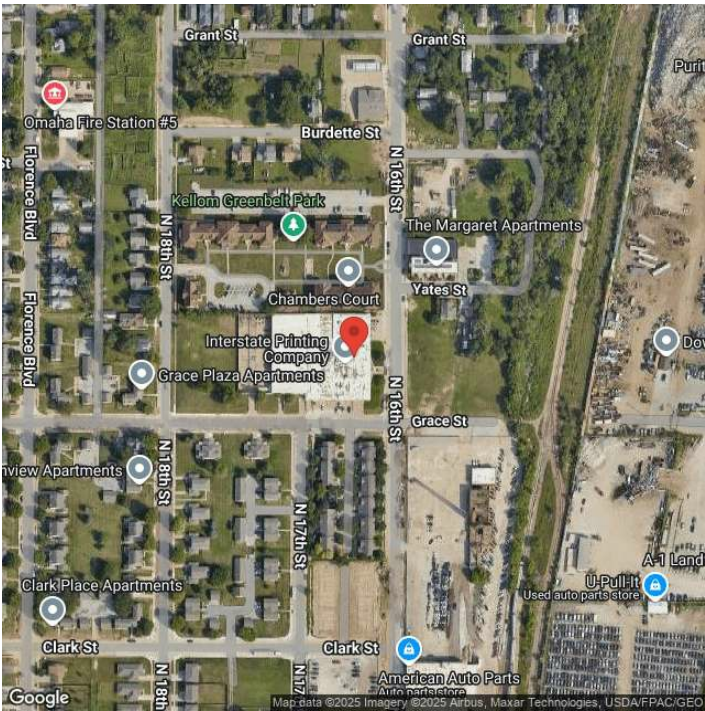
2002 N 16th Street is a 58,600 SF light manufacturing facility ideally suited for an owner-user. Situated on 3.21 acres, the building was originally constructed in 1957 with a major expansion in 1978. The property includes +/-4,200 SF of finished office space and features a mostly climate-controlled warehouse. Key highlights include five dock-high doors, one drive-in, and clear heights ranging from 14' to 16', providing flexibility for a variety of industrial users. NWC 16th & Grace St

1,483,458  
60 Mile Radius

589,152  
60 Mile Radius

**Rail Served:** No  
**Rail Accessible:** No  
**Rail Infrastructure in Place:** Unknown

Property Images



Angie Baber | Director, Economic Development | Greater Omaha Economic Development Partnership  
808 Conagra Dr. | Omaha, NE 68102 | [ababer@selectgreateromaha.com](mailto:ababer@selectgreateromaha.com)