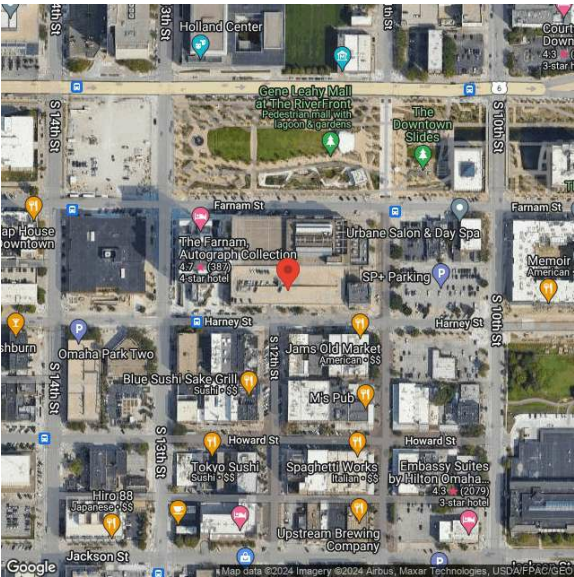


Landmark Center

1194 Harney St, Suite 520 | Omaha, NE | US | Douglas County

Available SF: 2,733 | Lease Rate: \$33.5



Building Type:	Office
Available SF:	2,733
Total SF:	2,733
Number of Stories:	15
Zoning:	CBD
Year Built:	1990
Lease Rate:	\$33.5
Last Updated:	Jun 2, 2025

Economic Development Contact

Angie Baber

Greater Omaha Economic Development Partnership

808 ConAgra Drive, Ste 400

Omaha, NE 68102

| ababer@selectgreateromaha.com

Realtor/Owner Contact

Martin Patzner

Property and Area Description

Be a part of the redevelopment! Omahas premier multi-tenant, Class A office tower is under new ownership and is in the process of renovations to transform the building. Included in the redevelopment at Landmark Center is the newly constructed, high-end boutique hotel, The Farnam. This Autograph Collection, Marriott hotel features 120 guest rooms with sweeping views of the city. The Farnam will also feature their premier restaurant, Dynamite Woodfire Grill and Catalyst, the hotels chic, sophisticated bar and lounge. Along with the hotel transformations, Landmark Center is home to nine floors of office space.

Population

	573,821	911,189	969,106
	10 Mile Radius	20 Mile Radius	30 Mile Radius

Source: ESRI®, 2024

Households

	232,395	354,439	377,572
	10 Mile Radius	20 Mile Radius	30 Mile Radius

Source: ESRI®, 2024

Transportation

Rail Served: No
Rail Accessible: No
Rail Infrastructure in Place: Unknown

Property Images

