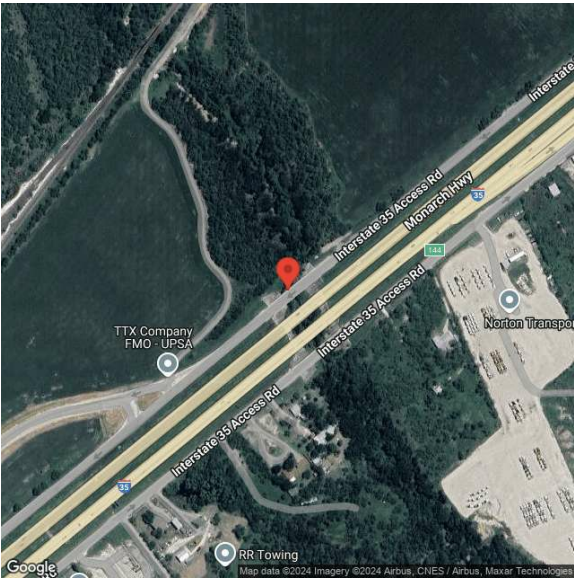


San Antonio Logistics Park - Section I - Bldg. A - Southern Tracts

13001 Interstate 35 Access Rd | Von Ormy, TX | US | Bexar County
Available SF: 893,760



Building Type:	Industrial
Available SF:	893,760
Total SF:	893,760
Last Updated:	Jan 3, 2025

Realtor/Owner Contact

Josh Aguilar
| joshua.aguilar@cbre.com

Property and Area Description

+/-893,760 SF Industrial Available at San Antonio Intermodal Terminal - BTS Opportunities Available - Size 893,760 SF - Dock-High Doors 176 - Grade-Level Doors 4 - Trailer Stalls 120 - Auto Parking Auto Parking: 743 (15 Accessible) @ .83/1000 SF San Antonio Logistics Park is Central Texas premier industrial logistics and manufacturing park co-located with Union Pacific Railroads state-of-the-art San Antonio Intermodal Terminal (SAIT), enabling users to reduce transportation costs and achieve more streamlined supply chains. The site is located in southwestern San Antonio, directly on the Interstate 35 corridor primary artery in the international supply chain, connecting Mexico, San Antonio, Austin, Dallas-Fort Worth, and the rest of the United States.

Population

	408,474 10 Mile Radius	1,565,986 20 Mile Radius	2,260,177 30 Mile Radius
--	----------------------------------	------------------------------------	------------------------------------

Source: ESRI®, 2024

Households

	127,851 10 Mile Radius	563,578 20 Mile Radius	821,839 30 Mile Radius
--	----------------------------------	----------------------------------	----------------------------------

Source: ESRI®, 2024

Transportation

Rail Served: Yes
Rail Served By: Union Pacific Railroad
Rail Accessible: Yes
Rail Infrastructure in Place: Unknown
Rail Contact: Cherramiee Peterson
Rail Contact Phone: 281-350-7496
Rail Contact Email: capeter2@up.com

Property Images

