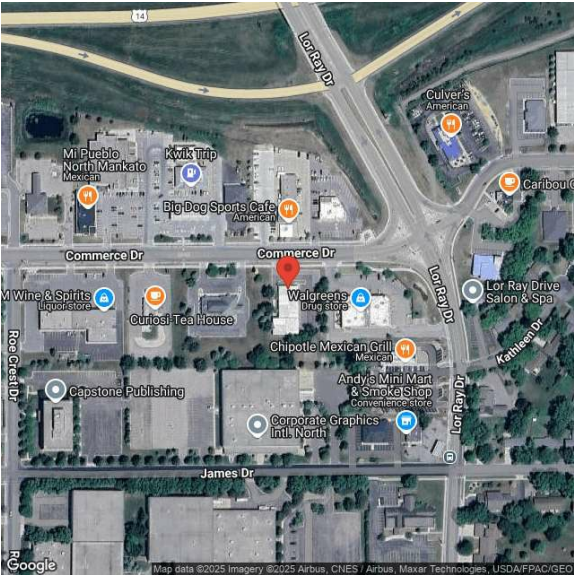


1715 Commerce Drive  
1715 Commerce Dr | North Mankato, MN | US | Nicollet County  
Available SF: 10,100



Property and Area Description

Prime retail or redevelopment site available in the heart of North Mankato's main retail corridor. This high-visibility location offers excellent access to Highway 14, making it ideal for attracting strong customer traffic. Surrounded by well-established national and local businesses including Starbucks, Chipotle, Kwik Trip, Walgreens, Caribou Coffee, Culvers, and Taylor Corporation, the site presents a unique opportunity to join a thriving commercial area. The property also features ample parking, providing convenience for both customers and staff. Whether you're looking to establish a new retail presence or redevelop for a different use, this site offers both strategic location and exceptional potential. Located off Commerce Drive in upper North Mankato, this property offers easy access to Highway 14 and sits within a busy commercial area, ideal for retail or redevelopment opportunities.

Population



Source: ESRI®, 2024

Households



Source: ESRI®, 2024

Building Type:	Retail
Available SF:	10,100
Total SF:	10,100
Year Built:	1990
Last Updated:	Aug 1, 2025

Economic Development Contact

Mike Fischer  
City of North Mankato  
1001 Belgrade Avenue  
North Mankato, MN 56003  
(507) 625-4141 | michael.f@northmankato.com

Realtor/Owner Contact

Zach Alms  
| zach@cbfishergroup.com

Transportation

Rail Served: No  
Rail Accessible: No  
Rail Infrastructure in Place: Unknown

Utilities

Electric: Xcel