

1550 Madison Avenue #101 & 103
, Suite 103 | Fort Atkinson, WI | US | Jefferson County
Available SF: 2,200 | Lease Rate: \$12.95



Building Type:	Retail
Available SF:	2,200
Total SF:	2,200
Lease Rate:	\$12.95
Last Updated:	Aug 21, 2024

Economic Development Contact

Deb Reinbold
Thrive Economic Development
864 Collins Road, Suite 111
Jefferson, Wisconsin 53549
(920) 674-8710 | deborahr@thriveED.org

Rebecca Houseman
City of Fort Atkinson
101 N Main Street
Fort Atkinson, Wisconsin 53538
(920) 563-7760 | rhouseman@fortatkinsonwi.gov

Realtor/Owner Contact

Blake George
| bgeorge@lee-associates.com

Property and Area Description

3,880 sq. ft. available (Suite 101: 1,680 sq. ft. and Suite 103: 2,200 sq. ft.); Excellent highway exposure with pylon signage; Existing tenants include Subway and Pizza Hut; New hotel to be developed on adjacent property (80 rooms); Other national retailers in the immediate area; Easy on/off Highway traffic; Lease Rate: \$12.95/Sq. Ft. (NNN) 1550 Madison Ave., Fort Atkinson, WI 3,880 sq. ft. available (Suite 101: 1,680 sq. ft. and Suite 103: 2,200 sq. ft.); Excellent highway exposure with pylon signage; Existing tenants include Subway and Pizza Hut; New hotel to be developed on adjacent property (80 rooms); Other national retailers in the immediate area; Easy on/off Highway traffic; Lease Rate: \$12.95/Sq. Ft. (NNN)

Population



Source: ESRI®, 2025

Households



Source: ESRI®, 2025

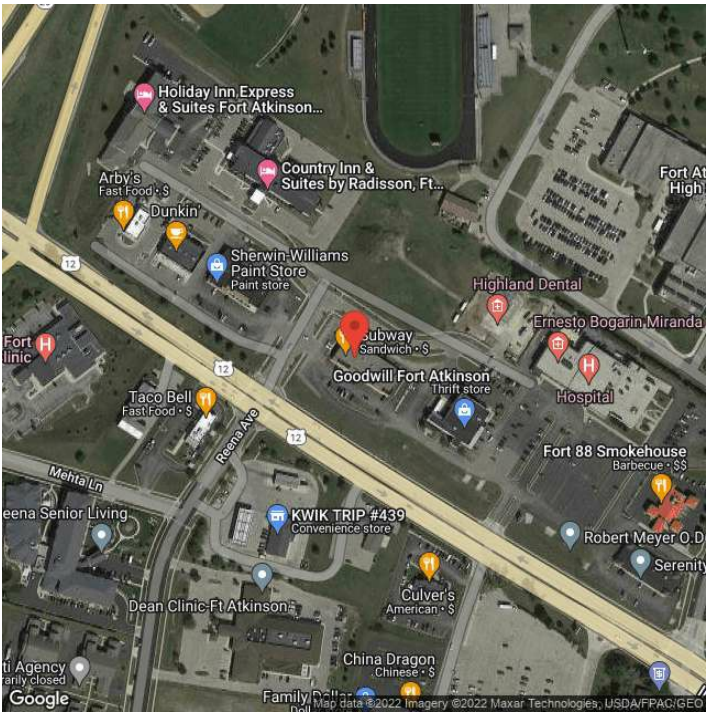
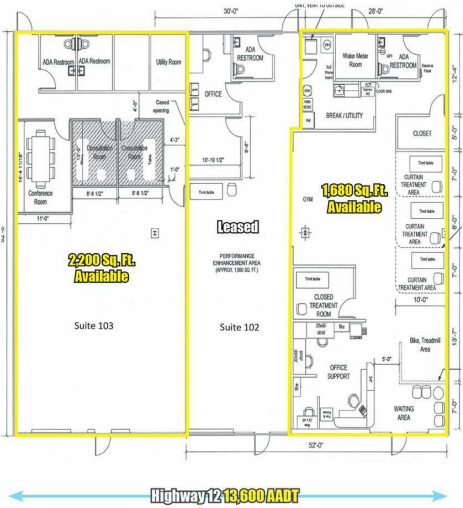
Transportation

Rail Served: No
Rail Accessible: No
Rail Infrastructure in Place: Unknown

Property Images



Floor Plan



Julie Olver | Marketing Manager | Thrive Economic Development
864 Collins Rd., Ste 111 | Jefferson, WI 53549 | (920) 674-8711 | julieo@thriveED.org