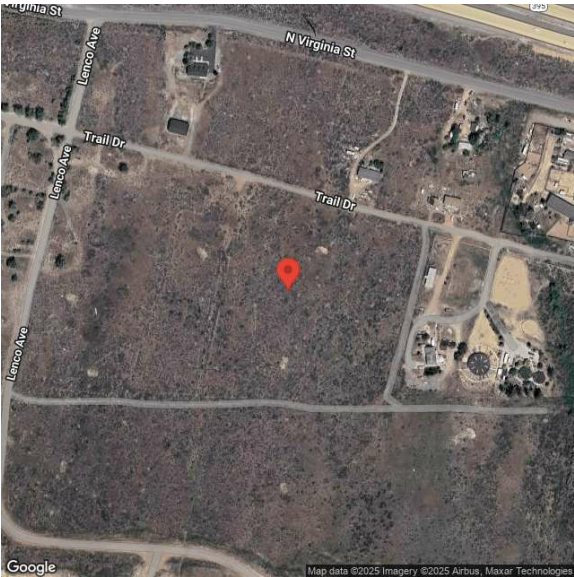


Building A
10408 Trail Dr | Reno, NV | US | Washoe County
Available SF: 552,720



Building Type:	Industrial
Available SF:	552,720
Total SF:	552,720
Year Built:	2027
Last Updated:	Aug 13, 2025

Realtor/Owner Contact
Mike Nevis
| mike.nevis@cushwake.com

Population

	258,890	505,707	555,969
	10 Mile Radius	20 Mile Radius	30 Mile Radius

Source: ESRI®, 2024

Households

	102,144	201,678	222,392
	10 Mile Radius	20 Mile Radius	30 Mile Radius

Source: ESRI®, 2024

Transportation

Rail Served: Yes
Rail Served By: Union Pacific Railroad
Rail Accessible: Yes
Rail Infrastructure in Place: Unknown