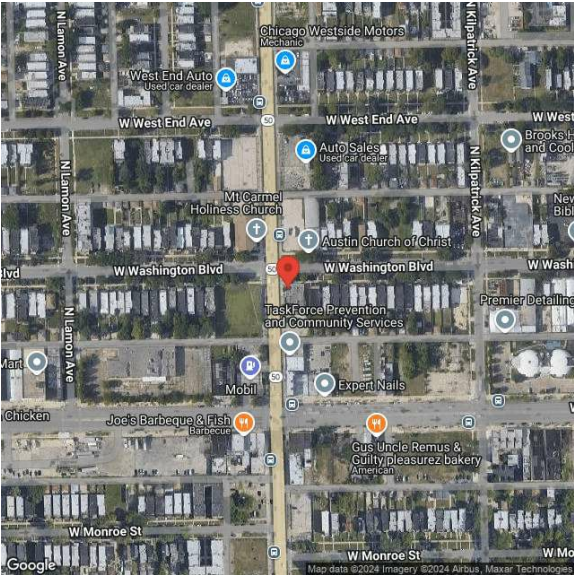


1031-33 N. Cicero Ave
33 N Cicero Ave | Chicago, IL | US | Cook County
Available SF: 30,000 | Lease Rate: \$6



Building Type:	Industrial
Available SF:	30,000
Total SF:	40,000
Lease Rate:	\$6
Last Updated:	Jul 2, 2025

Realtor/Owner Contact

Nick Saraceno
| nsaraceno@ctkcp.com

Property and Area Description

30,000-40,000 SF available 1031-1033 N. Cicero Ave

Population

	160,299	981,937	2,836,405
	2 Mile Radius	5 Mile Radius	10 Mile Radius

Source: ESRI®, 2024

Households

	62,305	388,643	1,201,997
	2 Mile Radius	5 Mile Radius	10 Mile Radius

Source: ESRI®, 2024

Transportation

Rail Served: Yes
Rail Served By: Union Pacific Railroad
Rail Accessible: Yes
Rail Infrastructure in Place: Unknown
Rail Contact: Ryan Wee
Rail Contact Phone: 262-277-8725
Rail Contact Email: rww@up.com