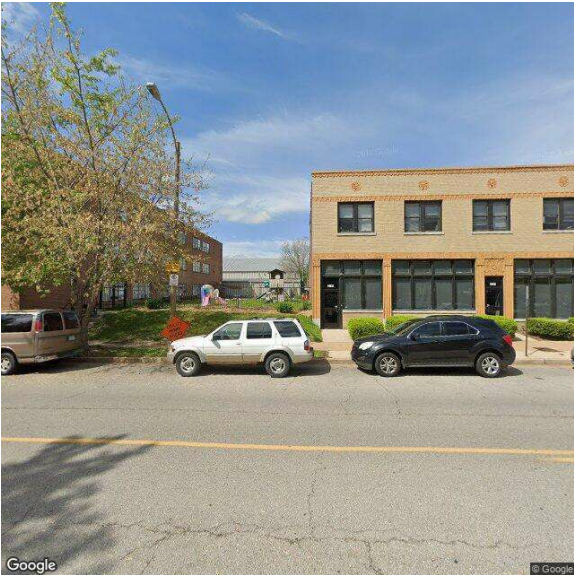


3141-3157 Lafayette - 63104
3141 Lafayette Ave | St. Louis, MO | US | St. Louis City County
Available SF: 42,000 | Sale Price: \$1,420,000



Building Type:	Investment
Available SF:	42,000
Total SF:	42,000
Sale Price:	\$1,420,000
Last Updated:	Dec 13, 2024

Economic Development Contact

Shavette Wayne-Jones
St. Louis Development Corporation
1520 Market, Suite 2000
St. Louis, MO 63103
(314) 657-3457 | waynes@stlouis-mo.gov

Realtor/Owner Contact

Peter Newton
| peter@hillikercorp.com

Population



Source: ESRI®, 2024

Households



Source: ESRI®, 2024

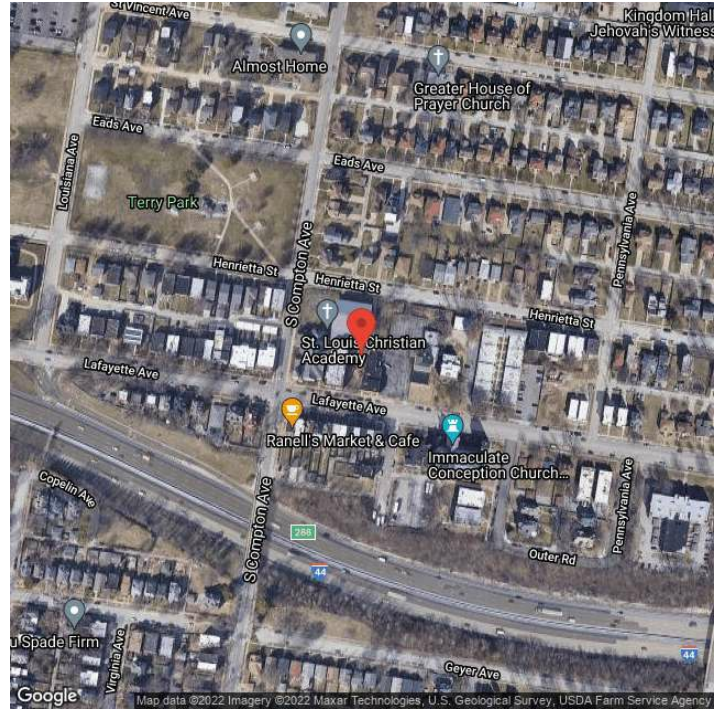
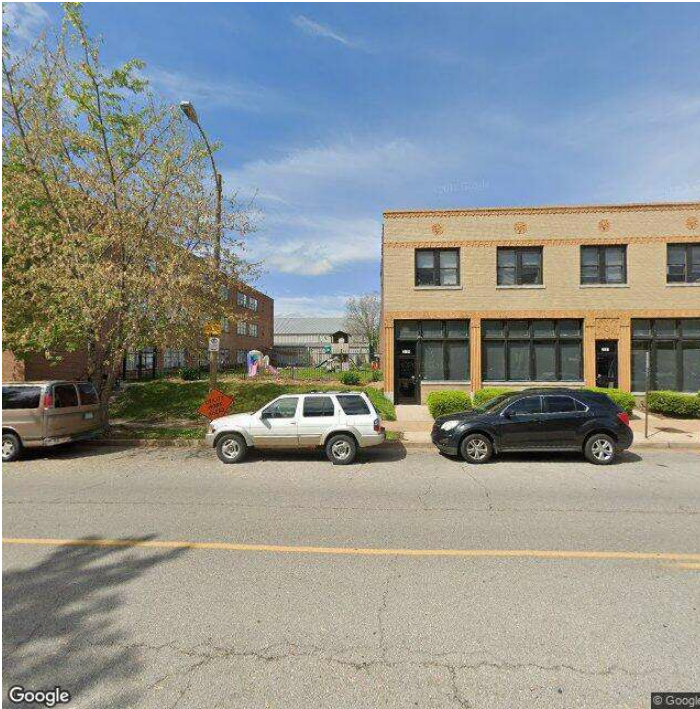
Transportation

Rail Served: No
Rail Accessible: No
Rail Infrastructure in Place: Unknown

Utilities

Electric: Ameren

Property Images



Zinnia Ron-Ferguson | Data Analyst Project Manager | St. Louis Economic Development Partnership
120 S. Central Ave. | St. Louis, MO 63105 | (314) 874-2557 | zron-ferguson@stlpartnership.com