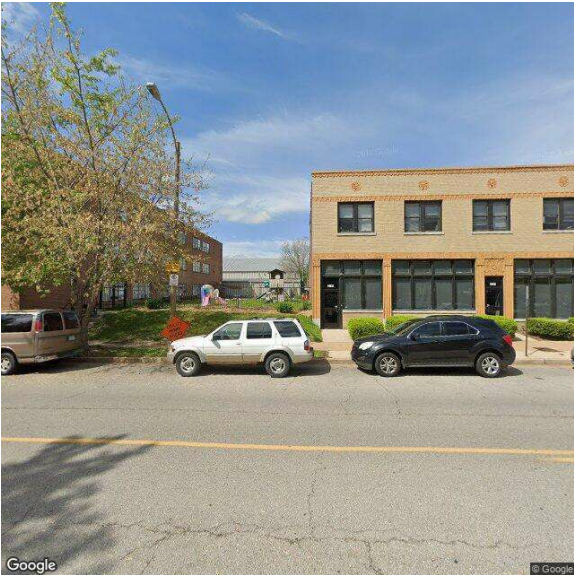


3141-3157 Lafayette - 63104  
3141 Lafayette Ave | St. Louis, MO | US | Adair County  
Available SF: 42,000 | Sale Price: \$1,420,000



Building Type:	Commercial
Available SF:	42,000
Total SF:	42,000
Sale Price:	\$1,420,000
Last Updated:	Dec 13, 2024

Economic Development Contact

Carolyn Chrisman  
Kirksville Regional Economic Development, Inc.  
315 S. Franklin  
Kirksville, MO 63501,  
(660) 665-2003 | 660-665-2003

Realtor/Owner Contact

Peter Newton  
| peter@hillikercorp.com

Population



Source: ESRI®, 2024

Households



Source: ESRI®, 2024

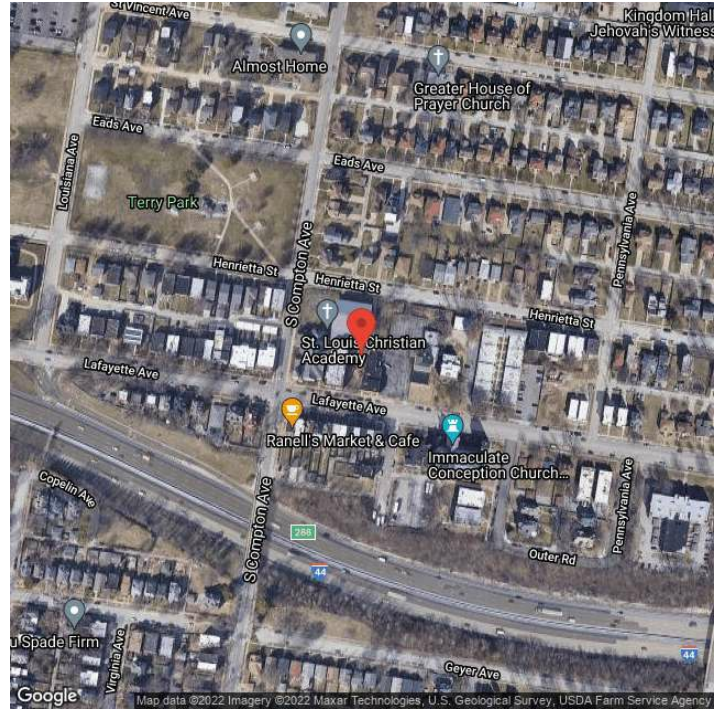
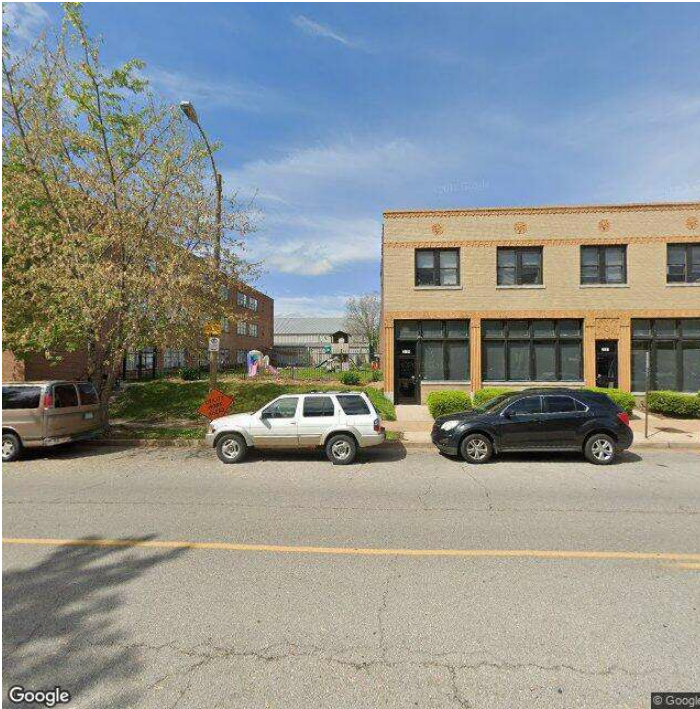
Transportation

Rail Served: No  
Rail Accessible: No  
Rail Infrastructure in Place: Unknown

Utilities

Electric: Ameren

## Property Images



Zinnia Ron-Ferguson | Data Analyst Project Manager | St. Louis Economic Development Partnership  
120 S. Central Ave. | St. Louis, MO 63105 | (314) 874-2557 | [zron-ferguson@stlpartnership.com](mailto:zron-ferguson@stlpartnership.com)