

419 Gano Ave
419 Gano Ave | St. Louis, MO | US | Adair County
Available SF: 180,000 | Sale Price: \$720,000



Building Type:	Industrial
Available SF:	180,000
Total SF:	180,000
Sale Price:	\$720,000
Last Updated:	Dec 13, 2024

Economic Development Contact

Carolyn Chrisman
Kirksville Regional Economic Development, Inc.
315 S. Franklin
Kirksville, MO 63501,
(660) 665-2003 | 660-665-2003

Realtor/Owner Contact

Patrick McKay
| ptmckay@hillikercorp.com

Property and Area Description

180,000 Sq. Ft. multi-level office/warehouse with 0.8 Acre adjacent rocked parking lot. \$6,000.00/Month existing income from partial occupancy. 2 freight elevators, 3 docks 1 drive in, 100% sprinklered building. 2 blocks from I-70

Population



Source: ESRI®, 2024

Households



Source: ESRI®, 2024

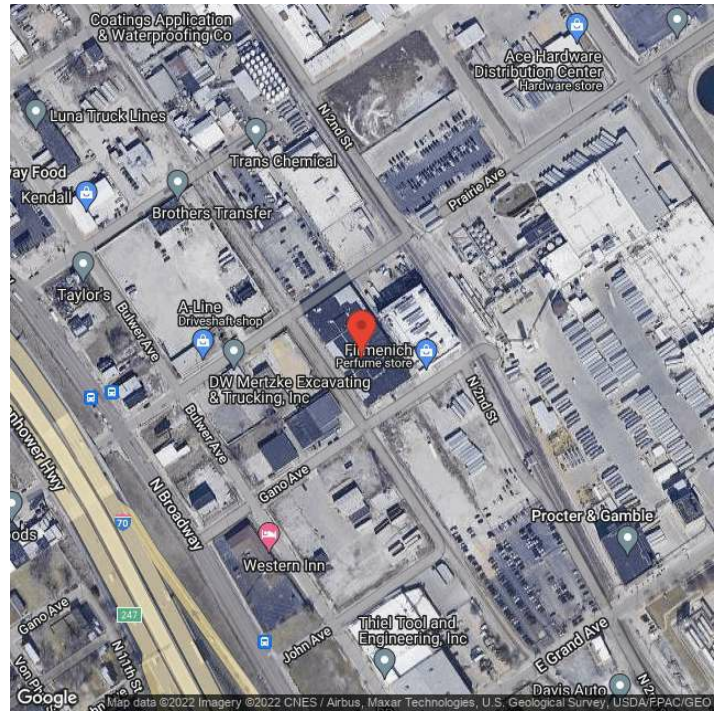
Transportation

Rail Served: No
Rail Accessible: No
Rail Infrastructure in Place: Unknown

Utilities

Electric: Ameren

Property Images



Zinnia Ron-Ferguson | Data Analyst Project Manager | St. Louis Economic Development Partnership
120 S. Central Ave. | St. Louis, MO 63105 | (314) 874-2557 | zron-ferguson@stlpartnership.com