

8915 S Broadway  
8915 S Broadway | St. Louis, MO | US | St. Louis County  
Available SF: 6,000



Building Type:	Industrial
Available SF:	6,000
Total SF:	6,000
Year Built:	1960
Last Updated:	Oct 15, 2025

Economic Development Contact

Michelle Stuckey  
St. Louis Economic Development Partnership  
120 S. Central, Suite 1200  
St. Louis, MO 63105  
(314) 615-7663 | mstuckey@stlpartnership.com

Jason Archer  
St. Louis Economic Development Partnership  
120 S. Central, Suite 1200  
St. Louis, MO 63105  
(314) 615-7663 | jarcher@stlpartnership.com

Realtor/Owner Contact

Dan Merlo  
| dmerlo@intcre.com

Property and Area Description

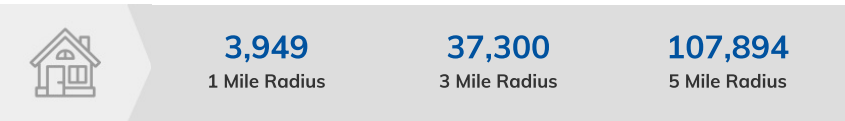
6,000 SF building for sale with 1.3 acres of storage. On hard corner of S Broadway and River City Casino Blvd. One (1) Drive-in (15' x 18'). Less than 1-mile from I-55 and River City Casino. Located at entrance to River City Casino. On the corner of S Broadway and River City Casino Blvd. In the Lemay district.

Population



Source: ESRI®, 2025

Households



Source: ESRI®, 2025

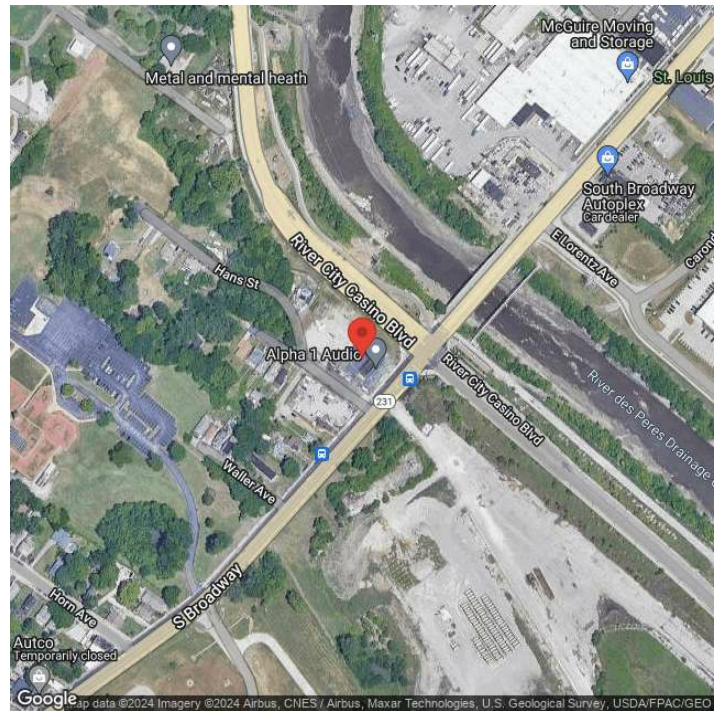
Transportation

Rail Served: Yes  
Rail Served By: Union Pacific Railroad  
Rail Accessible: Yes  
Rail Infrastructure in Place: Unknown  
Rail Contact: Kate M. Betsworth  
Rail Contact Phone: 402-544-3237  
Rail Contact Email: kmbetswo@up.com

Utilities

Electric: Ameren

## Property Images



Zinnia Ron-Ferguson | Data Analyst Project Manager | St. Louis Economic Development Partnership  
120 S. Central Ave. | St. Louis, MO 63105 | (314) 874-2557 | [zron-ferguson@stlpartnership.com](mailto:zron-ferguson@stlpartnership.com)