

3850 Delor St
3850 Delor St | St. Louis, MO | US | St. Louis City County
Available SF: 101,000 | Sale Price: \$1,250,000



Building Type:	Industrial
Available SF:	101,000
Total SF:	101,000
Sale Price:	\$1,250,000
Last Updated:	May 28, 2025

Economic Development Contact

Shavette Wayne-Jones
St. Louis Development Corporation
1520 Market, Suite 2000
St. Louis, MO 63103
(314) 657-3457 | waynes@stlouis-mo.gov

Realtor/Owner Contact

Will Mura
| william.mura@cbre.com

Property and Area Description

101,000 SF Manufacturing Facility For Sale + 101,000 SF + 12,000 +/- Office & Locker Room + 14 Clear in the warehouse + 2,000 SF of 42 High Bay + 30 x 25 Column Spacing + 7 Docks & 3 Drive-ins + Crane Served: 5 & 10 Ton Cranes + New roof 2021 + Fenced with an Acre+ of Outdoor Storage + Zoned K-unrestricted

Population



Source: ESRI®, 2024

Households



Source: ESRI®, 2024

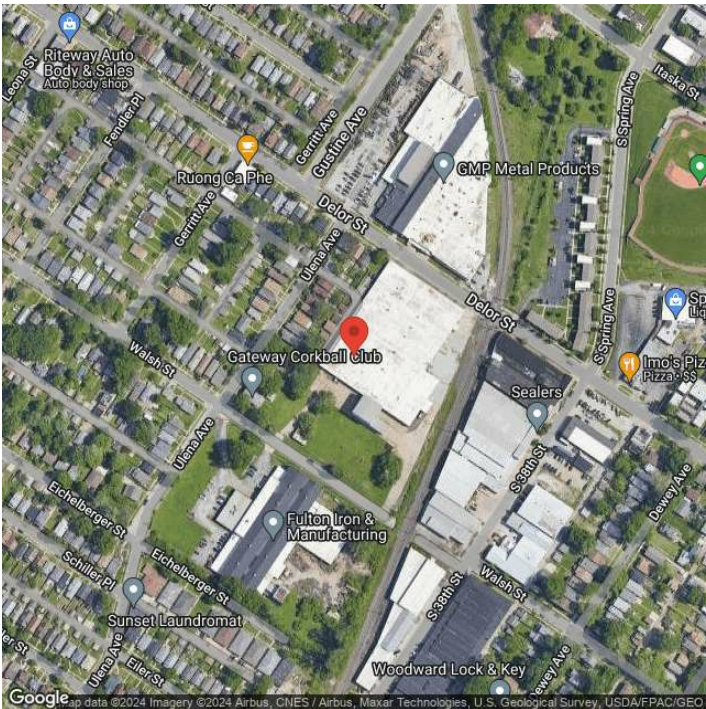
Transportation

Rail Served: Yes
Rail Served By: Union Pacific Railroad
Rail Accessible: Yes
Rail Infrastructure in Place: Unknown
Rail Contact: Kate M. Betsworth
Rail Contact Phone: 402-544-3237
Rail Contact Email: kmbetswo@up.com

Utilities

Electric: Ameren

Property Images



Zinnia Ron-Ferguson | Data Analyst Project Manager | St. Louis Economic Development Partnership
120 S. Central Ave. | St. Louis, MO 63105 | (314) 874-2557 | zron-ferguson@stlpartnership.com