

805 Carlson Dr.
805 Carlson Dr | Manhattan, KS | US | Pottawatomie County
Available SF: 2,150 | Lease Rate: \$15.63



Building Type:	Office, Retail, Industrial
Available SF:	2,150
Total SF:	2,150
Zoning:	IL
Year Built:	1998
Lease Rate:	\$15.63
Last Updated:	Nov 15, 2024

Realtor/Owner Contact
Brady Lundeen

Property and Area Description

*PRICE INCLUDES UTILITIES Large open work area (2) 12x10 private offices (2) 12x19 rooms for office, work area, conference, storage Private restroom Storage/IT closet with mop sink loading dock with double doors Located between Hwy 24 & McCall Rd in the east Manhattan retail/business corridor .

Population



Source: ESRI®, 2024

Households



Source: ESRI®, 2024

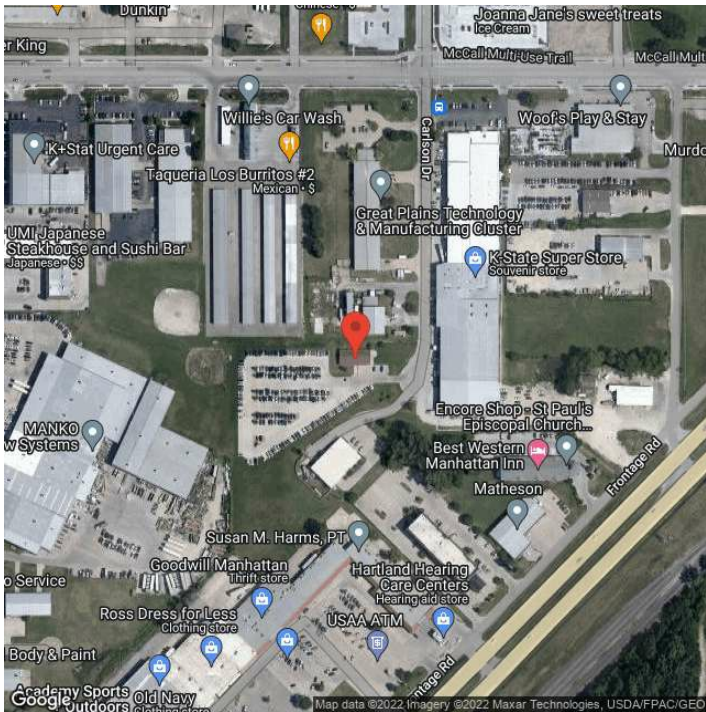
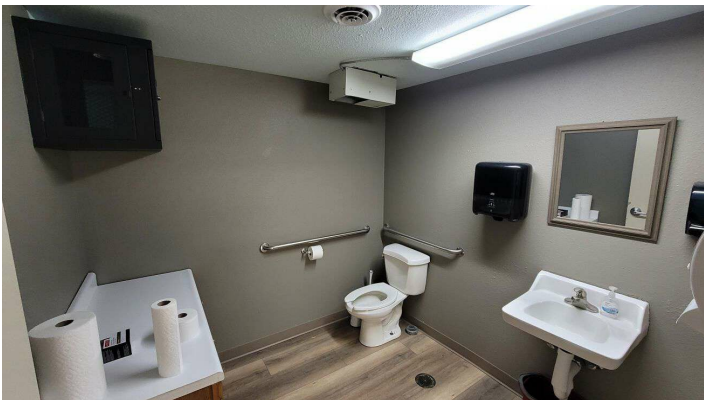
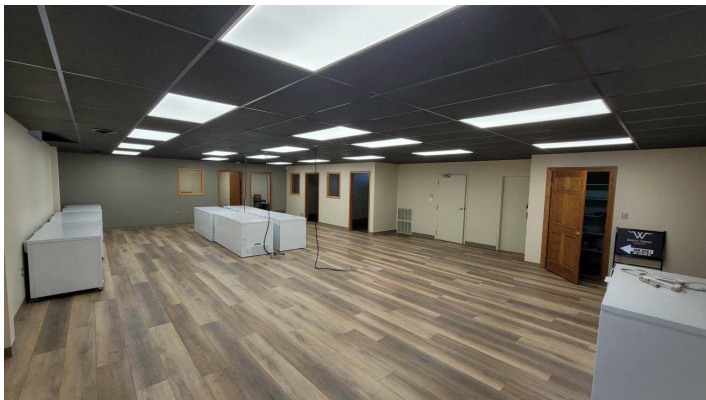
Transportation

Rail Served: Yes
Rail Served By: Union Pacific Railroad
Rail Accessible: Yes
Rail Infrastructure in Place: Unknown
Rail Contact: Kate M. Betsworth
Rail Contact Phone: 402-544-3237
Rail Contact Email: kmbetswo@up.com

Utilities

Electric: Evergy

Property Images



Daryn Soldan | Director | Greater Manhattan Economic Partnership
501 Poyntz | Manhattan, KS | (785) 776-8829 | daryn@manhattan.org