

701 S 16th St
701 S 16th St | Manhattan, KS | US | Riley County
Available SF: 2,600 | Lease Rate: \$8.31



Building Type:	Industrial
Available SF:	2,600
Total SF:	2,600
Zoning:	IL
Year Built:	1968
Lease Rate:	\$8.31
Last Updated:	May 19, 2025

Realtor/Owner Contact
Brady Lundeen

Property and Area Description

Warehouse/Shop located in south central Manhattan off of Hwy 18/Fort Riley Blvd. (3) 10x10 OH Drive-In doors (1) 10x12 OH Drive-In door Large fenced in lot on 0.85 acres with 2 gated entrances. Large Office area with restroom and storage/parts room

Population



Source: ESRI®, 2024

Households

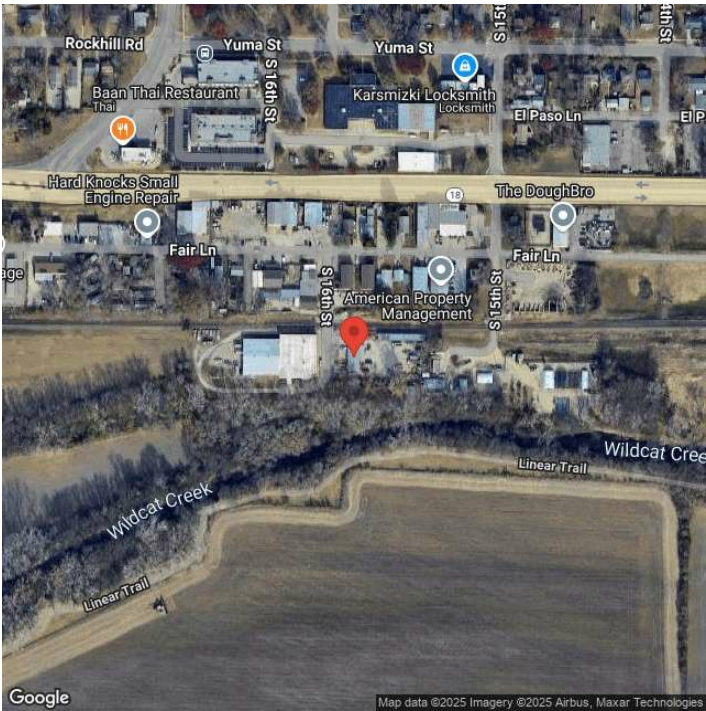


Source: ESRI®, 2024

Transportation

Rail Served: Yes
Rail Served By: Union Pacific Railroad
Rail Accessible: Yes
Rail Infrastructure in Place: Unknown
Rail Contact: Kate M. Betsworth
Rail Contact Phone: 402-544-3237
Rail Contact Email: kmbetswo@up.com

Property Images



Daryn Soldan | Director | Greater Manhattan Economic Partnership
501 Poyntz | Manhattan, KS | (785) 776-8829 | daryn@manhattan.org