



Building Type:	Industrial
Available SF:	481,520
Total SF:	481,520
Zoning:	Industrial
Year Built:	2023
Last Updated:	Jul 7, 2025

### Economic Development Contact

Rona Stringfellow  
City of Wilmer, TX  
128 N. Dallas Avenue  
Wilmer, TX 75172  
(972) 441-6373 | rstringfellow@cityofwilmer.net

### Realtor/Owner Contact

Nathan Lawrence  
| awrence@kbcadvisors.com

### Property and Area Description

DalPort Trade Center Building B is a new Class A industrial logistics facility totaling 481,520 SF. The property boasts frontage on I-45 within a proven industrial district with superior highway access. Located 3 miles from UP Intermodal, 4 miles from FedEx Ground hub, 7 miles to I-20 and 15 miles to Dallas CBD. Triple Freeport tax exemption eligible.

### Population

	289,745	1,795,701	3,927,074
	10 Mile Radius	20 Mile Radius	30 Mile Radius

Source: ESRI®, 2024

### Households

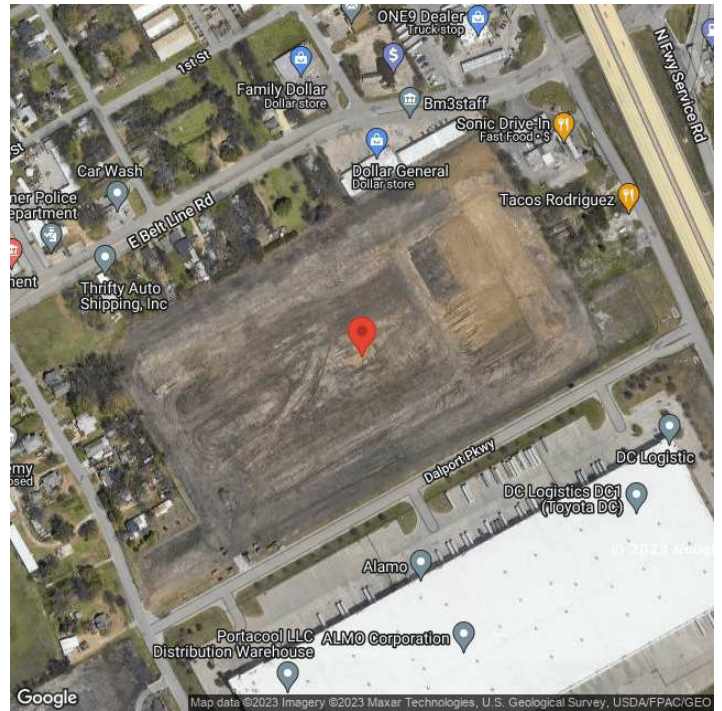
	90,603	655,118	1,461,515
	10 Mile Radius	20 Mile Radius	30 Mile Radius

Source: ESRI®, 2024

### Transportation

Rail Served: Yes  
Rail Served By: Union Pacific Railroad  
Rail Accessible: Yes  
Rail Infrastructure in Place: Unknown  
Rail Contact: Cherramiee Peterson  
Rail Contact Phone: 281-350-7496  
Rail Contact Email: capeter2@up.com

## Property Images



Rona Stringfellow | City Administrator | Wilmer Economic Development Corp.  
128 North Dallas Ave. | Wilmer, TX 75172 | (972) 441-6373 | rstringfellow@cityofwilmer.net