

604 N Redbud Ave
604 N Redbud Ave | Broken Arrow, OK | US | Tulsa County
Available SF: 21,565 | Lease Rate: \$4.95



Building Type:	Industrial
Available SF:	21,565
Total SF:	21,565
Lease Rate:	\$4.95
Last Updated:	Apr 14, 2025


Realtor/Owner Contact

Oklahoma - Tulsa
David Glasgow
| david.glasgow@cbre.com

Property and Area Description


Industrial Facility for Sublease

Population

	506,982 10 Mile Radius	845,971 20 Mile Radius	968,814 30 Mile Radius
---	---------------------------	---------------------------	---------------------------

Source: ESRI®, 2024

Households

	203,783 10 Mile Radius	333,817 20 Mile Radius	379,743 30 Mile Radius
---	---------------------------	---------------------------	---------------------------

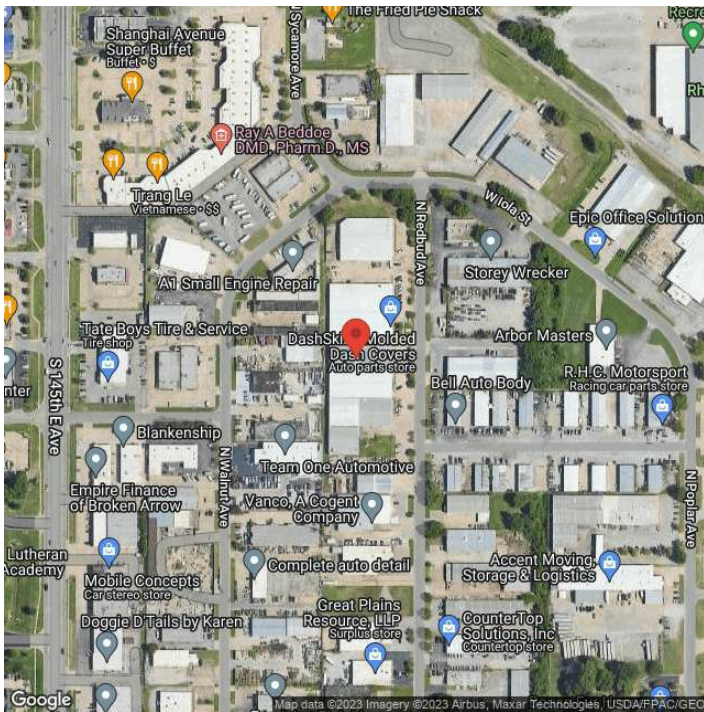
Source: ESRI®, 2024

Transportation

Rail Served: Yes
Rail Served By: Union Pacific Railroad
Rail Accessible: Yes
Rail Infrastructure in Place: Unknown
Rail Contact: Kate M. Betsworth
Rail Contact Phone: 402-544-3237
Rail Contact Email: kmbetswo@up.com

Utilities

Electric: American Electric Power



LocationOne® Copyright 2001-2025 Global Location Technologies. This information has been secured from sources we believe to be reliable, but we make no representation or warranties, expressed or implied, as to the accuracy of the information.