

8300 New Sapulpa Road - 8201 Highway 66
8300 New Sapulpa Rd | Tulsa, OK | US | Creek County
Available SF: 21,200 | Lease Rate: \$15 | Sale Price: \$2,950,000



Building Type:	Industrial
Available SF:	21,200
Total SF:	21,200
Sale Price:	\$2,950,000
Lease Rate:	\$15
Last Updated:	May 28, 2025

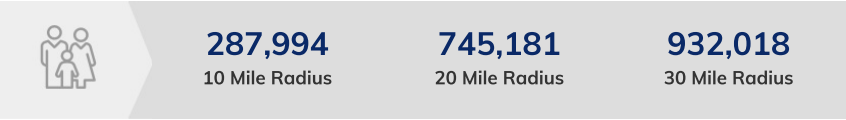
Realtor/Owner Contact

Jamie Hill
| jamie.hill@cbre.com

Property and Area Description

Showroom/Office/Service Bays with Highway Frontage for Sale or Lease

Population



Source: ESRI®, 2024

Households

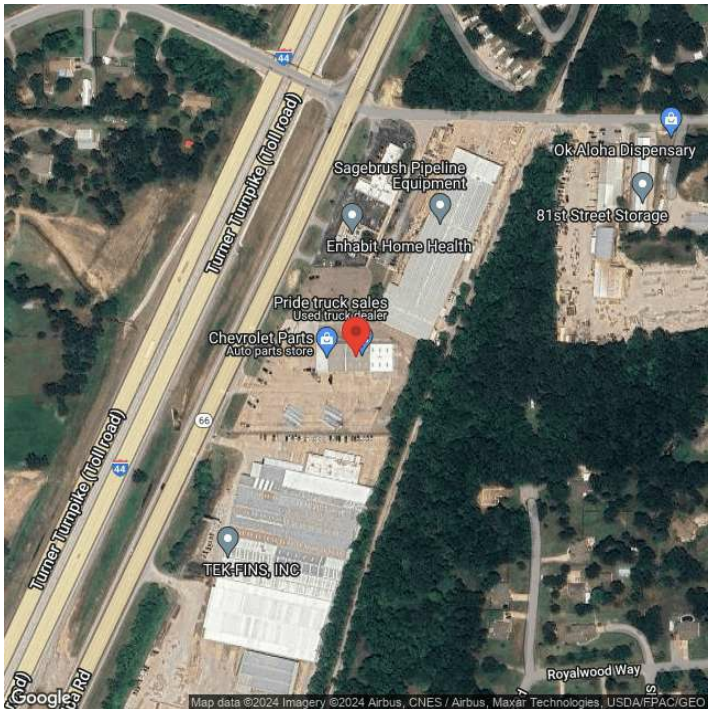


Source: ESRI®, 2024

Transportation

Rail Served: No
Rail Accessible: No
Rail Infrastructure in Place: Unknown

Property Images



Brien Thorstenberg, CEcD | Vice President of Aerospace and Manufacturing | Tulsa Regional Chamber Economic Development
One West Third Street, Suite 100 | Tulsa, OK 74103 | (918) 585-1201 | brienthorstenberg@tulsachamber.com