

Vandever Lofts
16 E 5th St, Suite Space 1 | Tulsa, OK | US | Tulsa County
Available SF: 50,250 | Lease Rate: \$16



Building Type:	Multifamily
Available SF:	50,250
Total SF:	50,250
Year Built:	1924
Lease Rate:	\$16
Last Updated:	Aug 26, 2024


Realtor/Owner Contact

Tim Strange
| tstrange@newmarkrp.com

Property and Area Description


Ground level space perfect for retail or office. Located in the heart of Downtown Tulsa, the Vandever Building is walking distance from BOK Center, Cox Business Center, Williams Center, Guthrie Green and the Performing Arts Center. Two spaces available

Population

	440,413 10 Mile Radius	855,675 20 Mile Radius	970,347 30 Mile Radius
---	----------------------------------	----------------------------------	----------------------------------

Source: ESRI®, 2024

Households

	184,307 10 Mile Radius	338,230 20 Mile Radius	381,060 30 Mile Radius
---	----------------------------------	----------------------------------	----------------------------------

Source: ESRI®, 2024

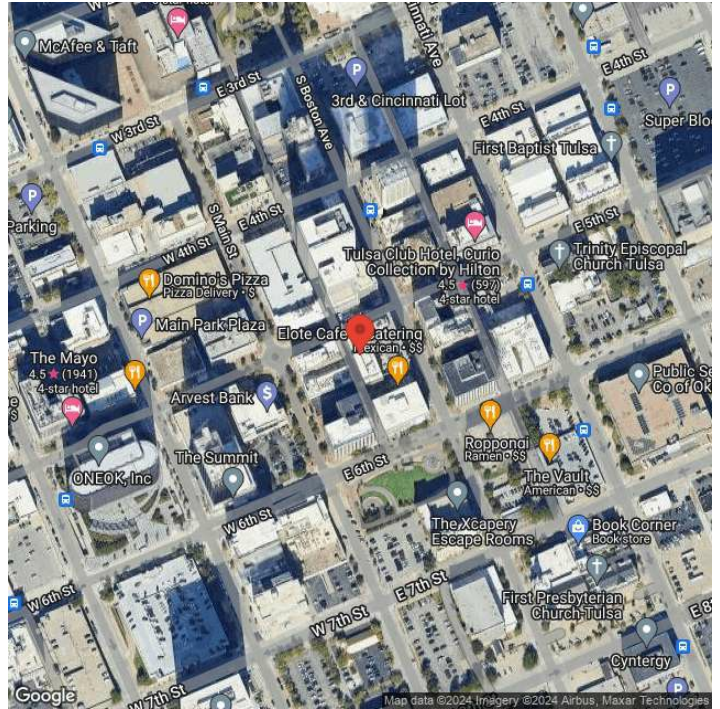
Transportation

Rail Served: Yes
Rail Served By: Union Pacific Railroad
Rail Accessible: Yes
Rail Infrastructure in Place: Unknown
Rail Contact: Kate M. Betsworth
Rail Contact Phone: 402-544-3237
Rail Contact Email: kmbetswo@up.com

Utilities

Electric: American Electric Power

Property Images



Brien Thorstenberg, CECD | Vice President of Aerospace and Manufacturing | Tulsa Regional Chamber Economic Development
One West Third Street, Suite 100 | Tulsa, OK 74103 | (918) 585-1201 | brienthorstenberg@tulsachamber.com

LocationOne® Copyright 2001-2025 Global Location Technologies. This information has been secured from sources we believe to be reliable, but we make no representation or warranties, expressed or implied, as to the accuracy of the information.