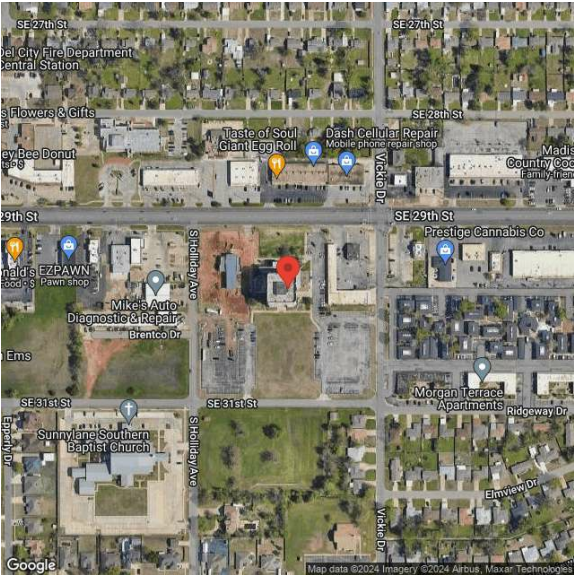


4600 SE 29th St - Arvest Tower  
4600 SE 29th St | Del City, OK | US | Oklahoma County  
Available SF: 85,688



Building Type:	Office
Available SF:	85,688
Total SF:	85,688
Year Built:	1974
Last Updated:	Jun 6, 2025

Realtor/Owner Contact

Emily Belusko  
| emily@fleskeholding.com

Property and Area Description

Nested on 5+ acres of land at 4600 SE 29th St, the Del City Tower presents a compelling office sale opportunity. This 7-story tower was built in 1974, offering a total of 85,688 SF. With ample parking spaces and prominent signage options, this property stands as a versatile investment, excluding banking for 5 years and restricting medical cannabis use. With zoning that supports various uses and a redevelopment potential, this property is well-suited for owner/users looking for a strategic location near Tinker Air Force Base. The location of this 7 story tower has a strategic positioning between Sunnylane and Sooner, offering easy access to I-40. This property is conveniently located near Tinker Air Force Base and provides proximity to major highways and a distribution hub.

Population

	1,423,862	1,575,896	1,743,709
	30 Mile Radius	45 Mile Radius	60 Mile Radius

Source: ESRI®, 2024

Households

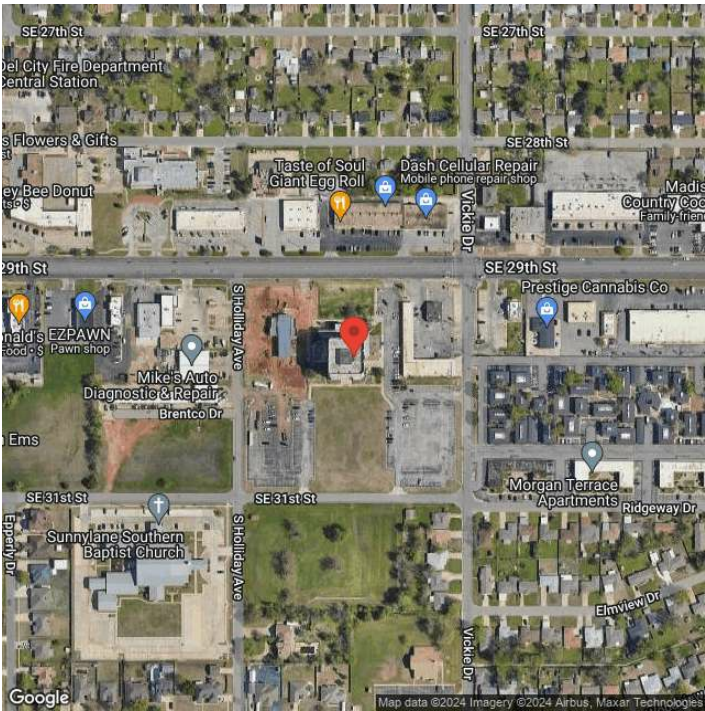
	555,235	612,009	675,075
	30 Mile Radius	45 Mile Radius	60 Mile Radius

Source: ESRI®, 2024

Transportation

Rail Served: No  
Rail Accessible: No  
Rail Infrastructure in Place: Unknown

Property Images



Christy (Elkins) Idleman | Economic Development Manager | OG&E  
| (405) 999-7676 | [idlemacb@oge.com](mailto:idlemacb@oge.com)