

2306 Enterprise Dr.
, Suite Space 1 | Durant, OK | US | Bryan County
Available SF: 1,296,562



Building Type:	Industrial
Available SF:	1,296,562
Total SF:	1,296,562
Year Built:	2003
Last Updated:	May 7, 2025

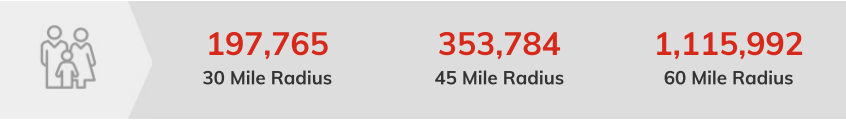
Realtor/Owner Contact

Brett Price
| bprice@newmarkrp.com

Property and Area Description

Climate controlled distribution facility for lease.

Population



Source: ESRI®, 2024

Households

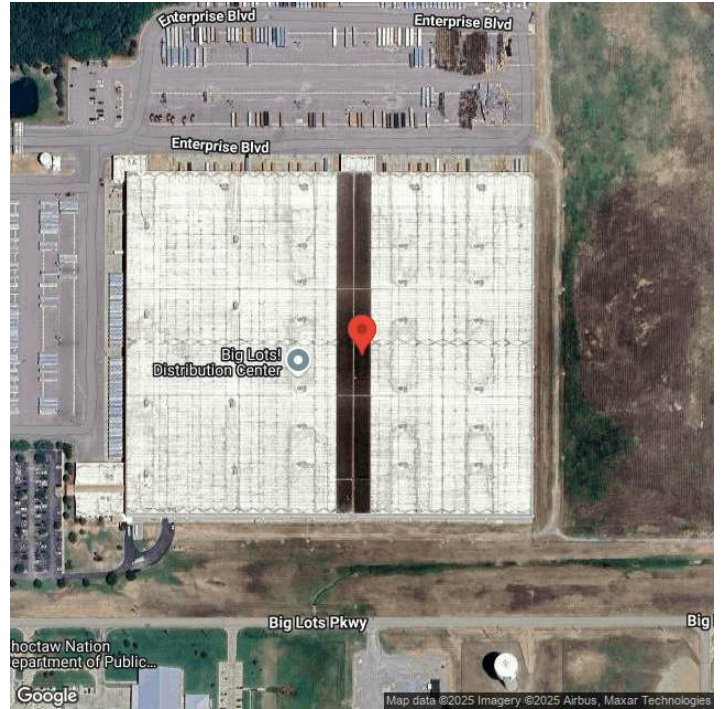


Source: ESRI®, 2024

Transportation

Rail Served: No
Rail Accessible: No
Rail Infrastructure in Place: Unknown

Property Images



Christy (Elkins) Idleman | Economic Development Manager | OG&E
| (405) 999-7676 | idlemacb@oge.com