

701 N. Scott St.
701 N. Scott St. | Joliet, IL | US | Will County
Available SF: 6,352 | Lease Rate: \$7.5 | Lease Terms: Triple Net



Property and Area Description

Industrial Flex Space for lease: Warehouse 5,600 SF and Office 800 SF. • Accommodates contractor space, industrial, storage • Newly painted, new metal roof, office updates • Drive-in door 10’x10’ • Dock door 9’x9’ • Ceiling height 13’ • No interior columns • New LED lighting • Zoning I-2 General Industrial

Population



Source: ESRI®, 2024

Building Type:	Industrial
Available SF:	6,352
Total SF:	6,352
Number of Stories:	1
Ceiling Peak:	13 Ft.
Expandable:	No
Zoning:	Industrial
Year Built:	1910
Specialty Features:	New Market Tax Credit,Enterprise Zone
Can Subdivide:	No
Within City Limits:	Yes
Construction Type:	Masonry
Floor Type:	Unknown
Sale Price Note:	Not for Sale
Lease Rate:	\$7.5
Lease Terms:	Triple Net
Last Updated:	Jun 19, 2023

Transportation

Nearest Highway: Route 53 (0.1 mi.)
Nearest Interstate: I-80 (1.75 mi.)
Nearest Airport: Joliet Regional Airport (6.5 mi.)
Nearest Commercial Airport: Midway International Airport (28 mi.)
Distance to Mass Transit: 0.1
Rail Served: No
Rail Served By: None
Rail Accessible: No
Rail Infrastructure in Place: No

Utilities

Natural Gas: Nicor Gas
Water: City of Joliet
Sewer: City of Joliet
Telecommunications: ComEd

Economic Development Contact

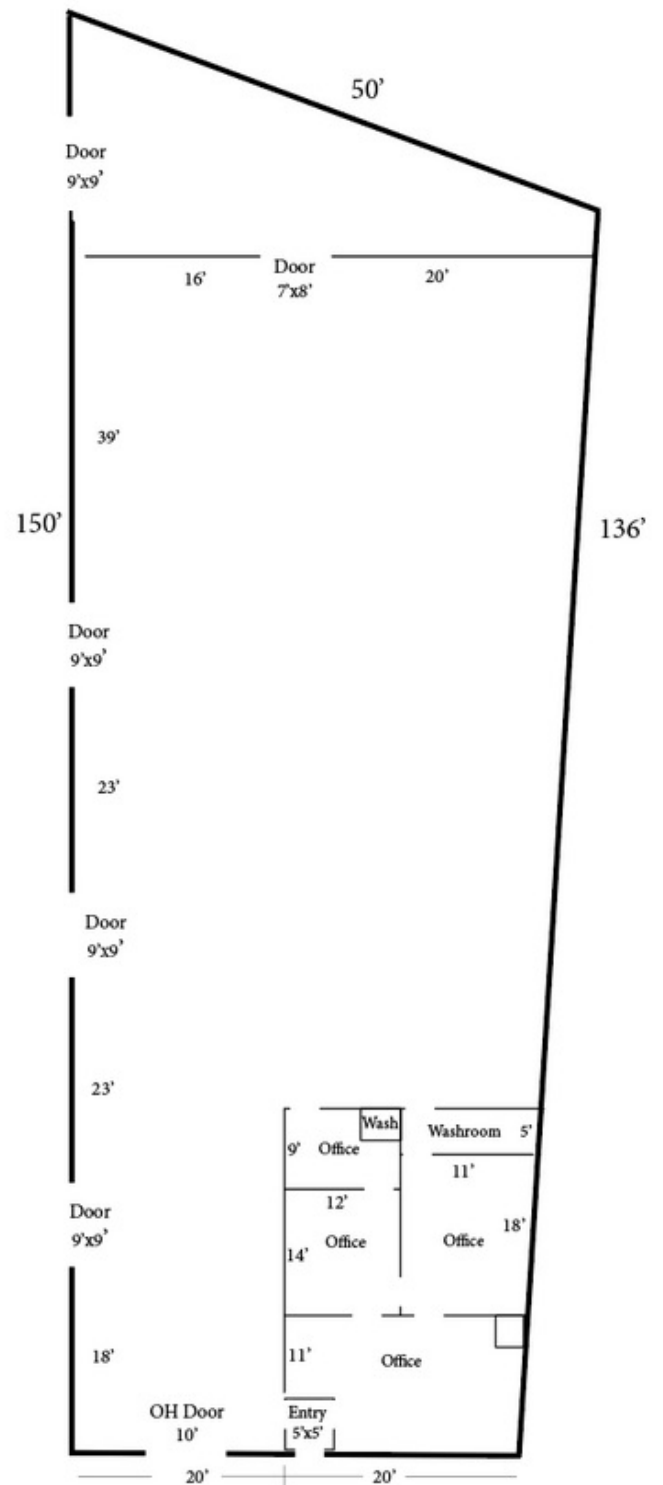
Cesar J. Suarez
City of Joliet
150 W. Jefferson Street
Joliet, IL 60432
(815) 724-4014 | csuarez@joliet.gov

Realtor/Owner Contact

Rudy Mahalik
(815) 791-2718 | rudy@callpdm.com

Property Images





Cesar J. Suarez | Economic Development Director | City of Joliet
 150 W. Jefferson St. | Joliet, IL 60432 | (815) 724-4014 | csuarez@joliet.gov