

2200 Muriel Court
2200 Muriel Ct, Suite On-Site Building | Joliet, IL | US | Will County
Available SF: 24,077 | Lease Rate: \$72,000



Building Type:	Industrial
Available SF:	24,077
Total SF:	24,077
Lease Rate:	\$72,000
Last Updated:	Dec 12, 2025

Realtor/Owner Contact

Matthew Maul
| mmaul@catoncommercial.com

Property and Area Description

New construction delivered March 2025 Approved for truck terminal use Fully paved site 3,000/sf of office space 2 warehouse spaces ideal for truck/trailer maintenance and day storage Drive in doors, 14 height Close proximity to Joliet Intermodal, 2.8 miles from 1-80 Briggs Street interchange,45 miles to Ohare Airport, 39 miles from Midway Airport

Population

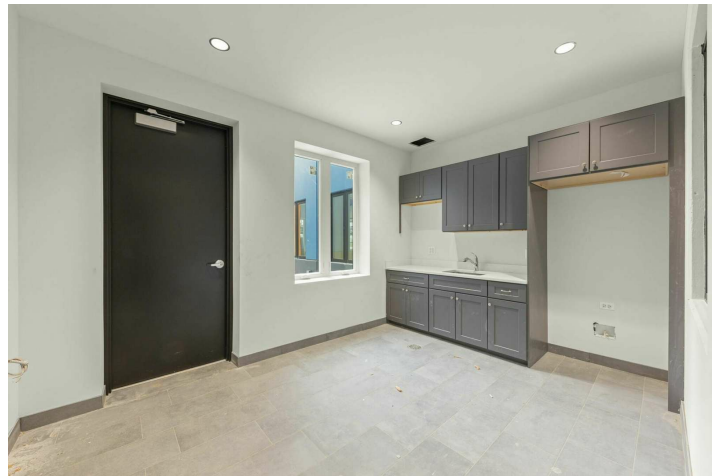
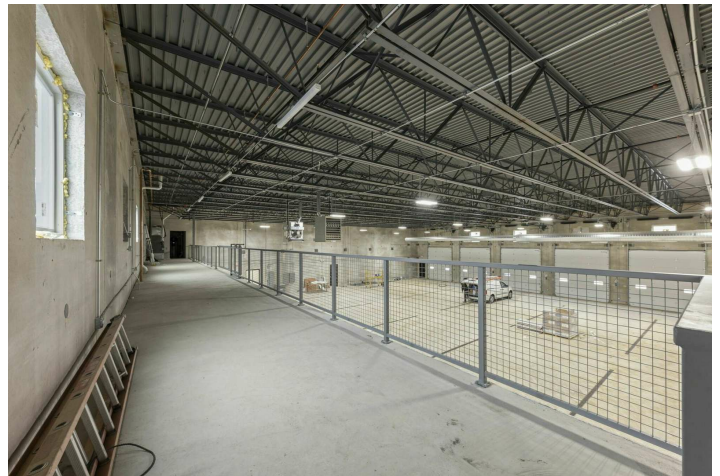
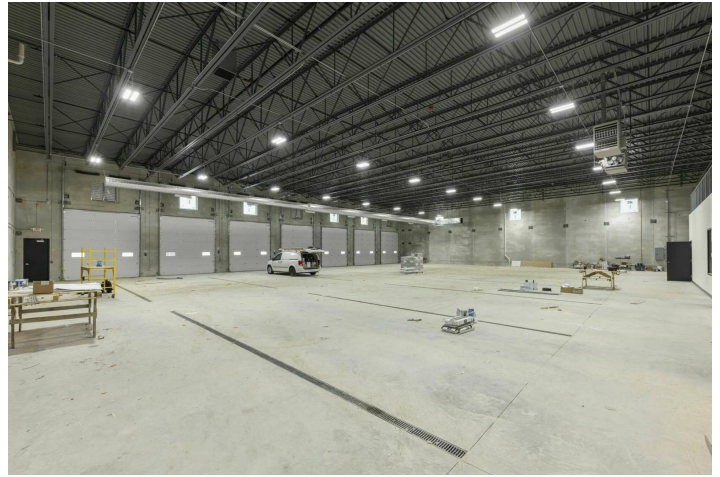


Source: ESRI®, 2025

Transportation

Rail Served: Yes
Rail Served By: Union Pacific Railroad
Rail Accessible: Yes
Rail Infrastructure in Place: Unknown
Rail Contact: Ryan Wee
Rail Contact Phone: 262-277-8725
Rail Contact Email: rwwee@up.com

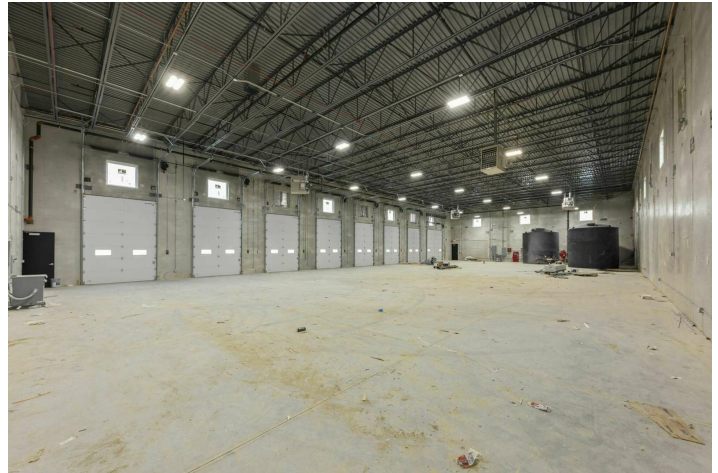
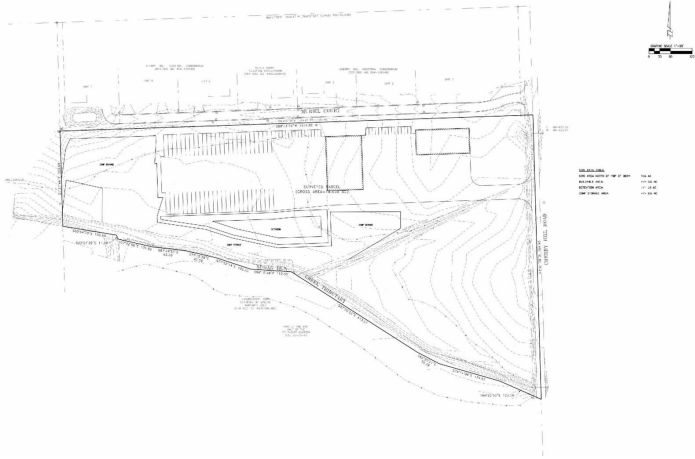
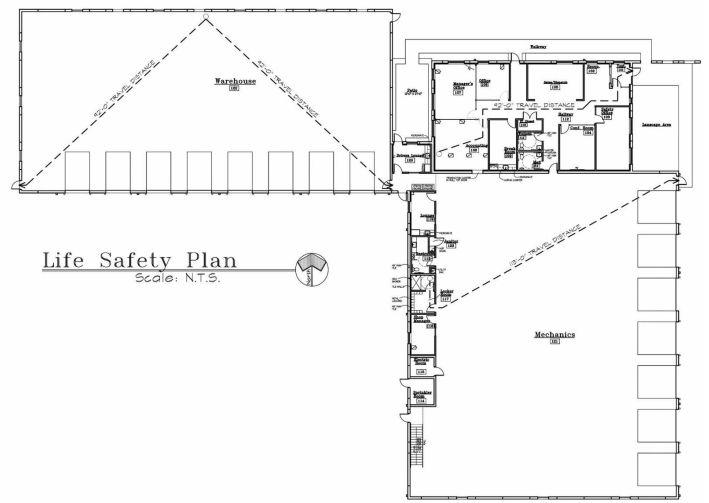
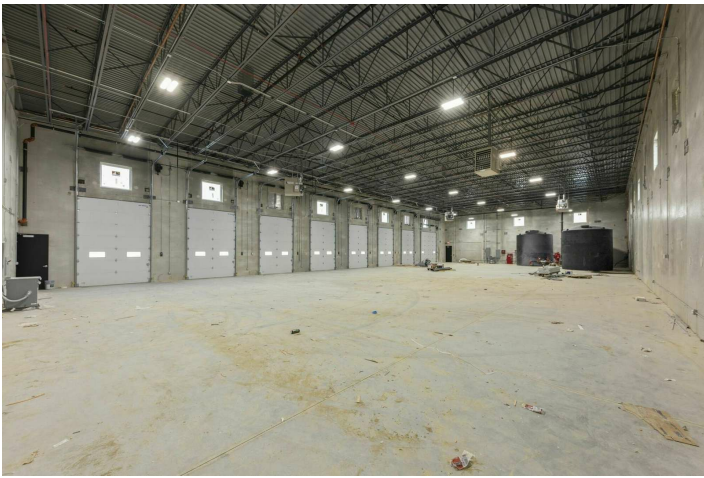
Property Images



Cesar J. Suarez | Economic Development Director | City of Joliet
150 W. Jefferson St. | Joliet, IL 60432 | (815) 724-4014 | csuarez@joliet.gov



Cesar J. Suarez | Economic Development Director | City of Joliet
150 W. Jefferson St. | Joliet, IL 60432 | (815) 724-4014 | csuarez@joliet.gov



Cesar J. Suarez | Economic Development Director | City of Joliet
150 W. Jefferson St. | Joliet, IL 60432 | (815) 724-4014 | csuarez@joliet.gov