

Former Chemic Building

4820 FM 2004 | Hitchcock, TX | US | Galveston County
Available SF: 10,300 | Sale Price: \$975,000



Property and Area Description

~10,300 SF Commercial/Industrial building with 7,000 SF assembly area and 3,300 SF of storage, office, and meeting space. 2 bay doors. Access to three phase power. Ample parking. City Freeport Exemption available. Additional 12.07 acres adjacent to site owned by seller.

Population



Source: ESRI®, 2024

Households



Source: ESRI®, 2024

Building Type:	Industrial
Available SF:	10,300
Total SF:	10,300
Number of Stories:	2
Ceiling Peak:	22 Ft.
Expandable:	Yes
Zoning:	Commercial
Site Size:	1.41 Acres
Year Built:	1975
Construction Type:	Metal or Steel
Floor Type:	Concrete
Sale Price:	\$975,000
Last Updated:	Apr 5, 2025

Transportation

Nearest Highway: FM 2004

Nearest Interstate: I-45 (2 mi.)

Nearest Airport: Scholes International (18 mi.)

Nearest Commercial Airport: Hobby (30 mi.)

Rail Served: No

Utilities

Electric: CenterPoint Energy

Water: City of Hitchcock

Sewer: City of Hitchcock

Telecommunications: XFINITY

Economic Development Contact

Lance LaCour, CEcD

Hitchcock Economic Development Corporation

8115 Hwy. 6, Suite 201

Hitchcock, TX 77563

(409) 502-7331 | econdir@cityofhitchcock.com

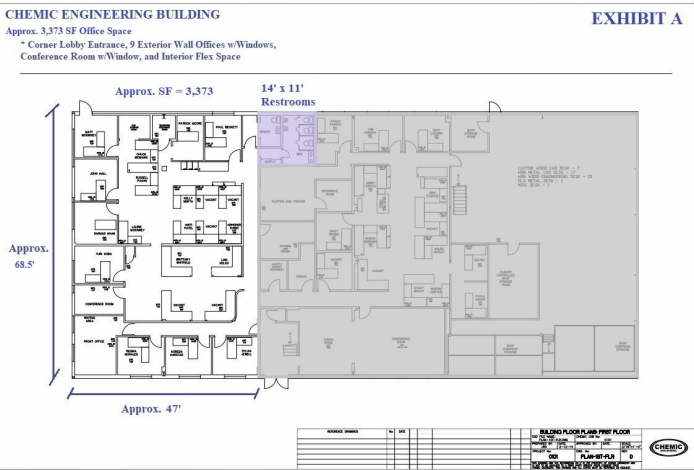
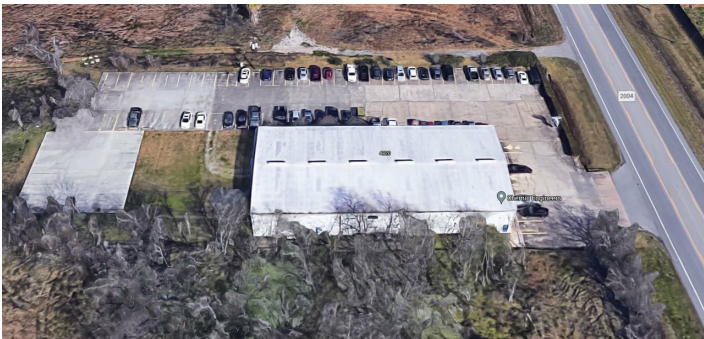
Realtor/Owner Contact

Valerie Garza

Elev8 Properties

832-797-0792

Property Images



Lance LaCour, CECD | Executive Director | Hitchcock Economic Development Corporation
8115 Hwy. 6. Suite 201 | Hitchcock, TX 77563 | (409) 502-7331 | econdir@cityofhitchcock.com