

5320 Fm 2004 Rd
5320 Fm 2004 Rd | Hitchcock, TX | US | Galveston County
Available SF: 3,480 | Lease Rate: \$16.56



Building Type:	Retail
Available SF:	3,480
Total SF:	3,480
Lease Rate:	\$16.56
Last Updated:	Apr 4, 2025

Economic Development Contact
Lance LaCour, CEcD
Hitchcock Economic Development Corporation
8115 Hwy. 6, Suite 201
Hitchcock, TX 77563
(409) 502-7331 | econdir@cityofhitchcock.com

Property and Area Description

Former site of an asphalt paving company on 5 acres with 153' of road frontage on FM 2004. Entrance on FM 2004 with access to Elm St. High auto traffic with over 15,000 drivers per day.

Population



Source: ESRI®, 2024

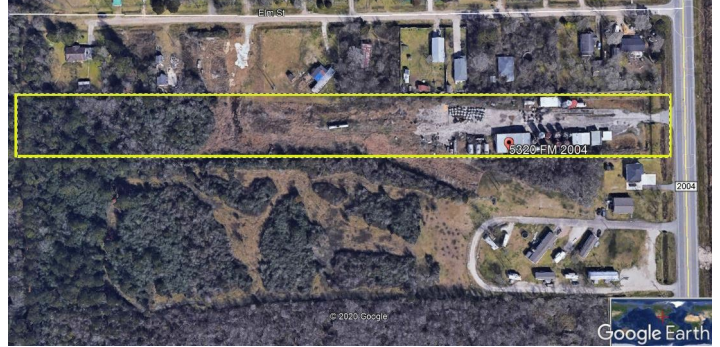
Households



Source: ESRI®, 2024

Transportation

Property Images



Lance LaCour, CEcD | Executive Director | Hitchcock Economic Development Corporation
8115 Hwy. 6. Suite 201 | Hitchcock, TX 77563 | (409) 502-7331 | econdir@cityofhitchcock.com