

Rogersville Land Lease

8278 US-60, Suite Commercial Land Lease - Rogersville, MO | Rogersville, MO
| US | Greene County
Available Acres: 27 | Lease Rate: \$65,000 |



Zoning:

Lease Rate:	65000
Last Updated:	Jul 4, 2025

Economic Development Contact

Nancy Edson
City Administrator
211 E. Center
Rogersville, Missouri 65742
(417) 753-2884 | nedson@rogersvillemo.org

Realtor/Owner Contact

Jeff Childs
| jeff.childs@svn.com

Property and Area Description

This site offers great visibility along the Hwy 60 corridor that serves as a gateway to Springfield for nearby communities. Traffic Count: 27,461
Located along East US Hwy 60 and 125.

Population

	13,358 5 Mile Radius	134,631 10 Mile Radius	716,876 50 Mile Radius
---	--------------------------------	----------------------------------	----------------------------------

Source: ESRI®, 2024

Households

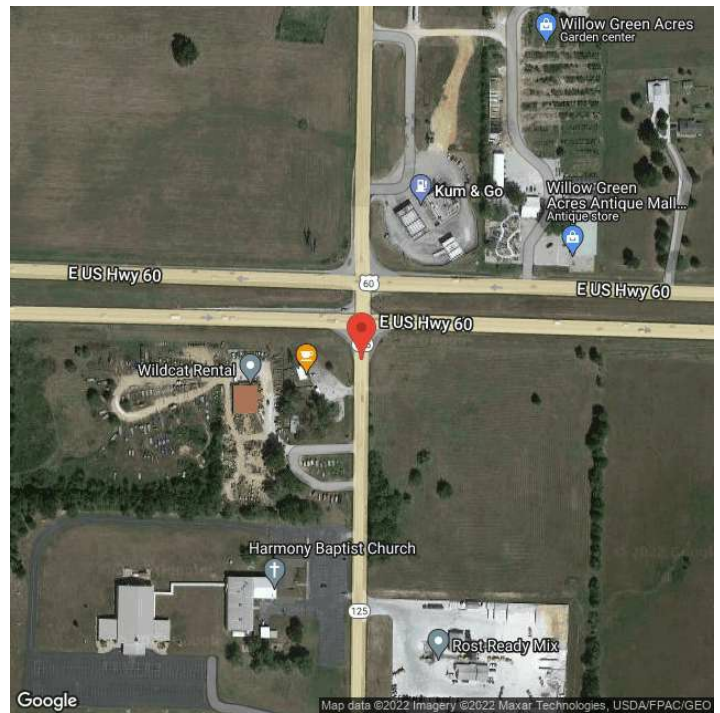
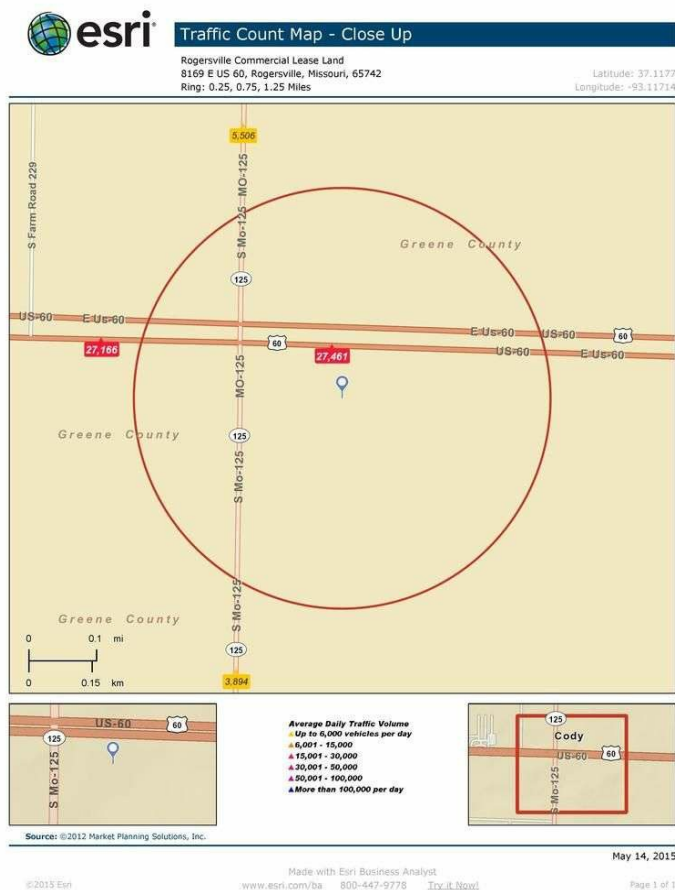
	5,104 5 Mile Radius	57,255 10 Mile Radius	292,432 50 Mile Radius
---	-------------------------------	---------------------------------	----------------------------------

Source: ESRI®, 2024

Transportation

Rail Served: No
Rail Accessible: No
Rail Infrastructure in Place: Unknown

Property Images



Ben Vickers | Manager of Business Development | Springfield Area Chamber of Commerce
202 S. John Q. Hammons Parkway | Springfield, MO 65806 | (417) 450-6751 | ben@springfieldchamber.com