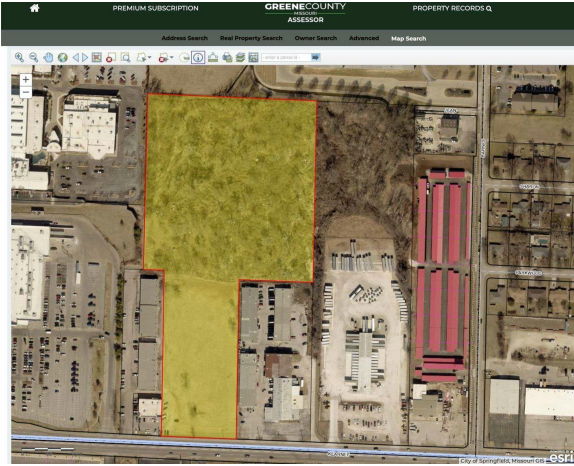


E. Kearney Street  
E Kearney St | Springfield, MO | US | Greene County  
Available Acres: 14.62 |



Zoning:  
Last Updated: Aug 1, 2025

Economic Development Contact  
Benjamin Vickers  
Springfield Area Chamber of Commerce  
202 S. John Q. Hammons Parkway  
Springfield, MO 65806  
| ben@springfieldchamber.com

Realtor/Owner Contact  
Arch Watson  
| arch.watson@svn.com

Property and Area Description

The lot has 285' of frontage on E Kearney and has all utilities and is zoned General Manufacturing. Located just east of the Kearney & Glenstone intersection. Retailers located at this intersection include Walmart Super Center, Big Shots Golf, Houlihan's, Kum N Go, Aldi and others.

Population



Source: ESRI®, 2024

Households

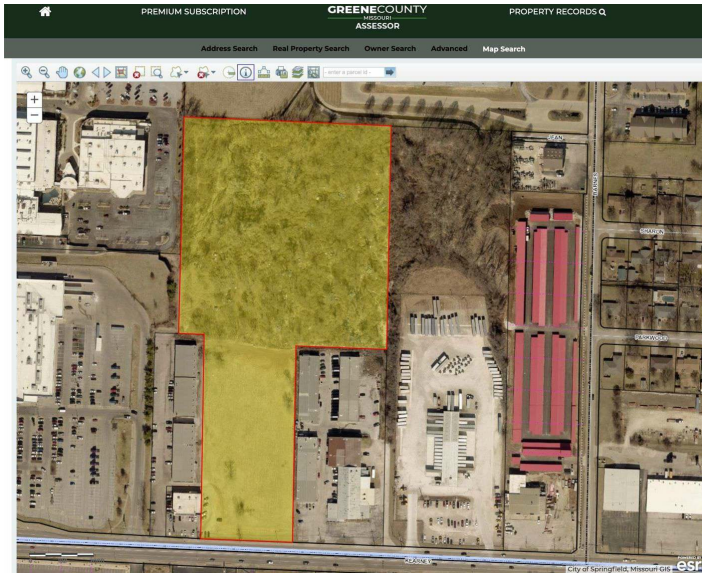


Source: ESRI®, 2024

Transportation

Rail Served: No  
Rail Accessible: No  
Rail Infrastructure in Place: Unknown

## Property Images



Ben Vickers | Manager of Business Development | Springfield Area Chamber of Commerce  
202 S. John Q. Hammons Parkway | Springfield, MO 65806 | (417) 450-6751 | [ben@springfieldchamber.com](mailto:ben@springfieldchamber.com)