

3900 W Sunshine St | Springfield, MO | US | Greene County
Available Acres: 59 |

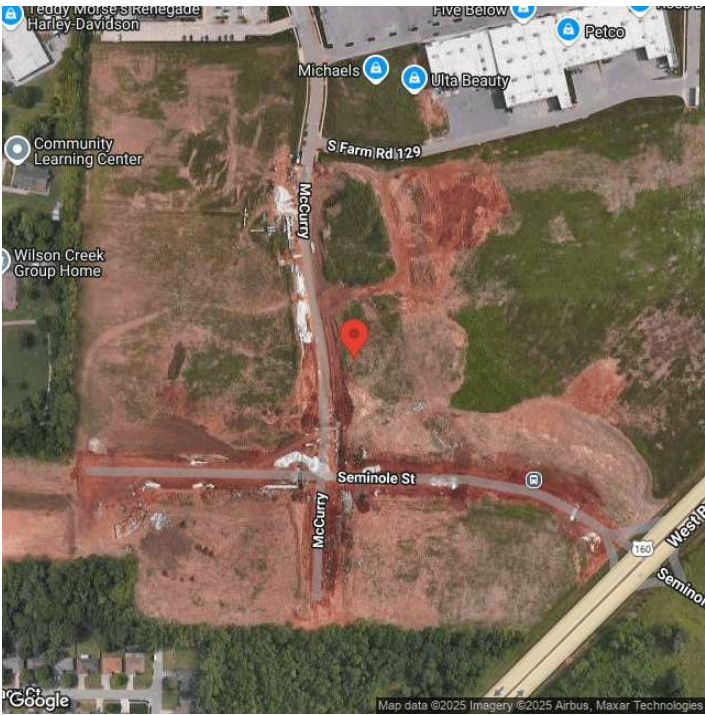
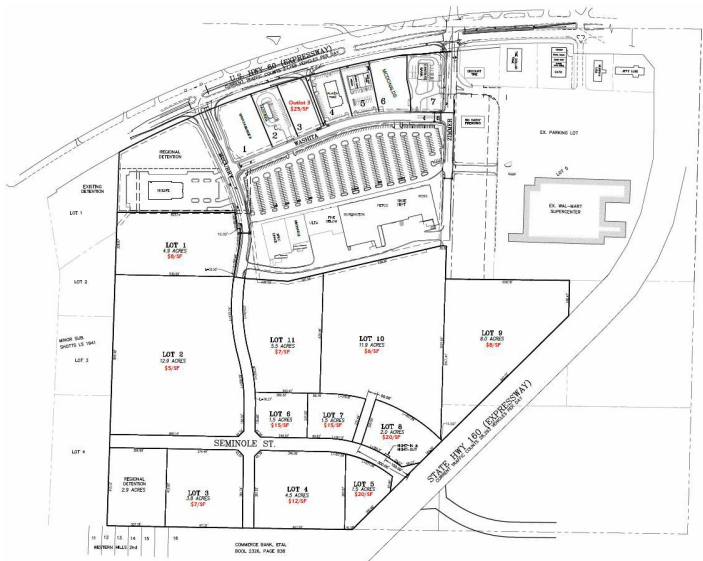


Last Updated: Jul 9, 2025

Jeff Childs
| jeff.childs@svn.com

Rail Served: No
Rail Accessible: No
Rail Infrastructure in Place: Unknown

Property Images



Ben Vickers | Manager of Business Development | Springfield Area Chamber of Commerce
202 S. John Q. Hammons Parkway | Springfield, MO 65806 | (417) 450-6751 | ben@springfieldchamber.com