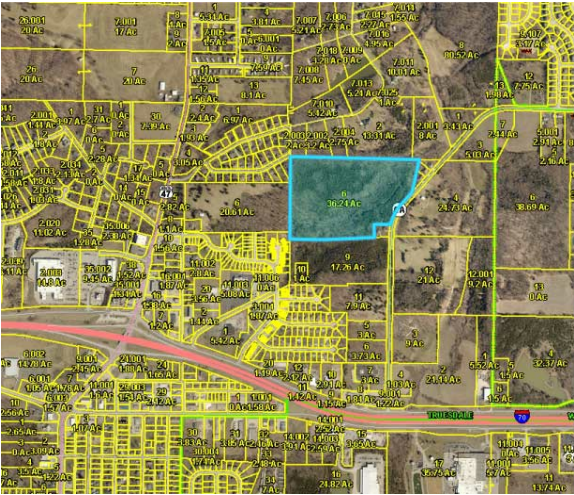


36 Highway AA
36 Highway AA | Warrenton, MO | US | Warren County
Available Acres: 36.24 | Sale Price: \$486,000



Moving Forward. Ideas In Motion.



Zoning:	Residential
Topography:	slightly rolling, wooded
Adjacent Available Acres:	45
Setting:	Other
Within City Limits:	Yes
Sale Price:	\$486,000
Last Updated:	Apr 10, 2025

Economic Development Contact

Tim Burks, Dir. Planning & Development
City of Warrenton
200 West Booneslick
Warrenton, Missouri 63383
(636) 456-3535 | tburks@warrenton-mo.org

Realtor/Owner Contact

Tom Brengle
Tom Brengle Westplex Real Estate
(636) 456-9099 | tbrengle@gmail.com

Property and Area Description

36.24 acres Hwy AA just past Warrenton Manor located in the City limits, all city utilities available. Many different options available with this property. Mostly wooded with a beautiful lake site!

Population

	39,546	207,863	505,706
	10 Mile Radius	20 Mile Radius	30 Mile Radius

Source: ESRI®, 2024

Households

	14,854	76,775	191,466
	10 Mile Radius	20 Mile Radius	30 Mile Radius

Source: ESRI®, 2024

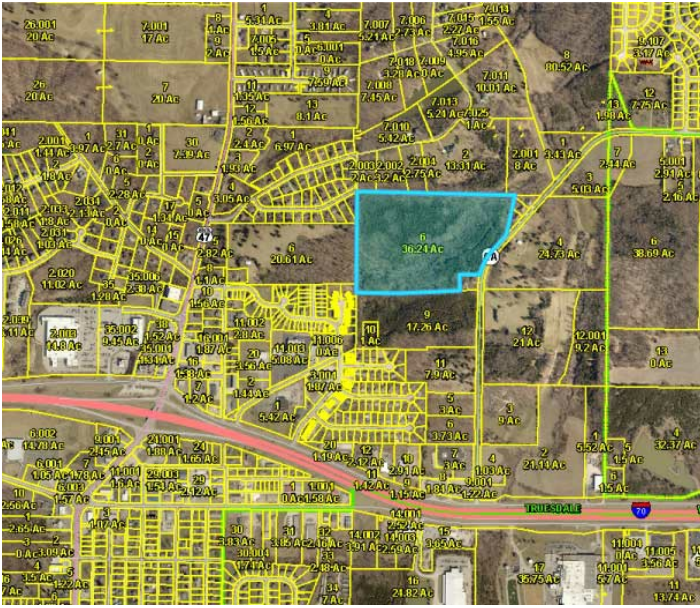
Transportation

Nearest Highway: State Highway 47 (1 mi.)
Nearest Interstate: Interstate 70 (2 mi.)
Nearest Airport: St. Louis International - Lambert (47 mi.)
Rail Served: Unknown
Rail Served By: Unknown
Rail Accessible: Unknown
Rail Infrastructure in Place: Unknown

Utilities

Electric: Ameren UE
Natural Gas: Ameren UE
Water: City of Warrenton
Sewer: City of Warrenton
Telecommunications: CenturyLink

Property Images



Tim Burks | Director of Planning & Development | City of Warrenton
200 West Booneslick | Warrenton, Missouri 63383 | (636) 456-3535 | tburks@warrenton-mo.org