

724 N Hwy 47
724 N Hwy 47 | Warrenton, MO | US | Warren County
Available Acres: 0.94 | Lease Rate: \$3,000 |



Moving Forward. Ideas In Motion.

For Sale/Lease/Build-to-Suit

Commercial Land

I-70 & Hwy. 47
Warrenton, MO 63383



- Last Remaining Lot - .94 acres
- Utilities in Place
- Zoned Commercial (C-3)
- High Traffic Counts
- Easy Access to I-70 and Hwy. 47
- Existing Curb Cut
- Ground Lease: \$3,000 per month
- Sale Price: \$350,000



Danny Wapellhorst
Vice President
Phone: (636) 970-0330
dannyw@cissellmueller.com



CISSELL MUELLER
COMPANY, LLC

Population



39,756
10 Mile Radius

190,157
20 Mile Radius

479,968
30 Mile Radius

Source: ESRI®, 2024

Households



14,977
10 Mile Radius

69,717
20 Mile Radius

181,456
30 Mile Radius

Source: ESRI®, 2024

Transportation

Rail Served: No
Rail Accessible: No
Rail Infrastructure in Place: Unknown

Utilities

Electric: Ameren

Zoning:	
Lease Rate:	3000
Last Updated:	May 7, 2025

Economic Development Contact
Tim Burks, Director of Planning & Development
City of Warrenton
200 West Booneslick
Warrenton, Missouri 63383
| tburks@warrenton-mo.org

Realtor/Owner Contact
Roxanne Preis

Property Images

For Sale/Lease/Build-to-Suit

Commercial Land

I-70 & Hwy. 47
Warrenton, MO 63383



- Last Remaining Lot - .94 acres
- Utilities in Place
- Zoned Commercial (C-3)
- High Traffic Counts
- Easy Access to I-70 and Hwy. 47
- Existing Curb Cut
- Ground Lease: \$3,000 per month
- Sale Price: \$350,000



Danny Wapelhorst

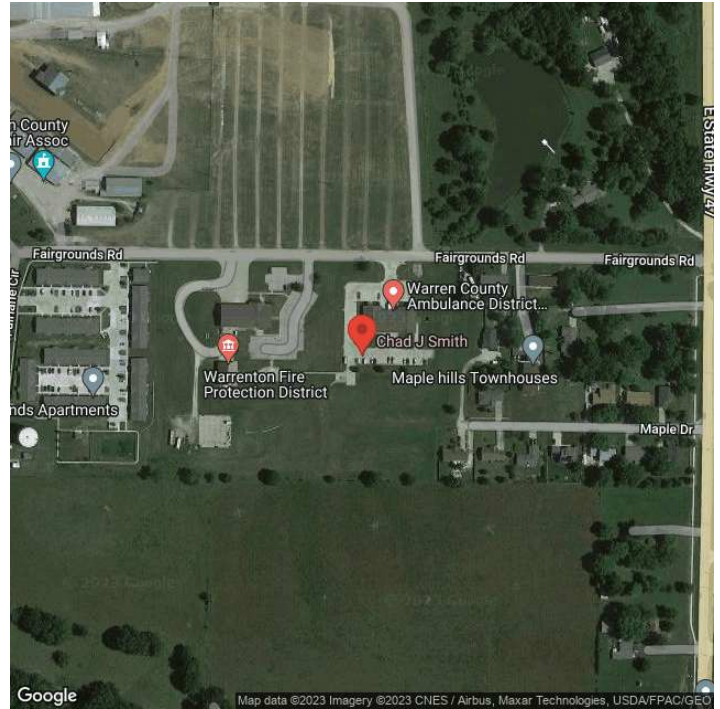
Vice President

Phone: (636) 970-0330

dannyw@cissellmueller.com



CISELL MUELLER
COMPANY, LLC



Tim Burks | Director of Planning & Development | City of Warrenton
200 West Booneslick | Warrenton, Missouri 63383 | (636) 456-3535 | tburks@warrenton-mo.org