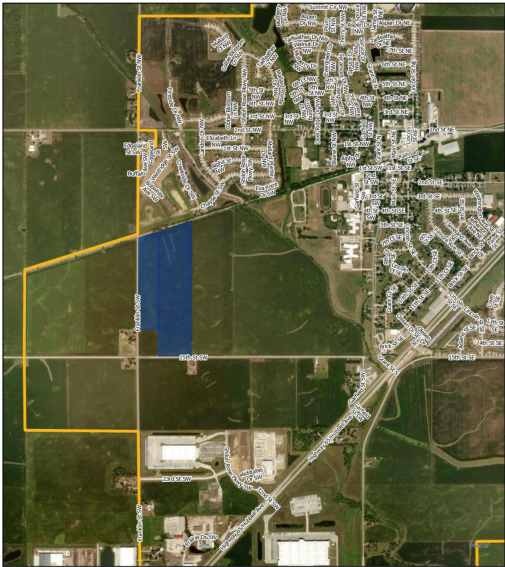
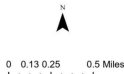


Area Map



Legend  
Corporate Limits  
Gholds



Zoning:	Industrial
Within City Limits:	Yes
Site Dimensions:	76 Ac
Last Updated:	Oct 31, 2024

**Economic Development Contact**

**Tiffany Luong, Economic Development Coordinator**  
City of Bondurant  
200 2nd St SE  
Bondurant, IA 50035  
(515) 630-6986 | tluong@cityofbondurant.com

**Stacie Lovan, Senior VP Economic Development**  
Greater Des Moines Partnership  
700 Locust St., Ste 100  
Des Moines, IA 50309  
(515) 286-4971 | slovan@DSMPartnership.com

**Realtor/Owner Contact**

**Tim George**  
GHOLDS LLC.  
515-988-6684 | tim@george-land.com

**Property and Area Description**

Two parcels 231/00214-002-000 and 231/00214-004-000 totally 76 acres zoned industrial located SW of Bondurant along Franklin St SW just West of the new Amazon Sortation Center and South of the Bondurant-Farrar Elementary and Middle School.

**Population**

	<b>206,501</b> 10 Mile Radius	<b>608,825</b> 20 Mile Radius	<b>817,678</b> 30 Mile Radius
--	----------------------------------	----------------------------------	----------------------------------

Source: ESRI®, 2024

**Households**

	<b>79,912</b> 10 Mile Radius	<b>244,682</b> 20 Mile Radius	<b>325,843</b> 30 Mile Radius
--	---------------------------------	----------------------------------	----------------------------------

Source: ESRI®, 2024

**Transportation**

**Nearest Highway:** Hwy 65 (5 mi.)  
**Nearest Interstate:** I80 (7 mi.)  
**Nearest Airport:** Ankeny Airport (7 mi.)  
**Nearest Commercial Airport:** Des Moines International Airport (19 mi.)  
**Distance to Mass Transit:** DART  
**Rail Served:** Unknown  
**Rail Served By:** Unknown  
**Rail Accessible:** Unknown  
**Rail Infrastructure in Place:** Unknown

**Utilities**

**Electric:** MidAmerican Energy Company  
**Natural Gas:** MidAmerican Energy  
**Water:** City of Bondurant, Des Moines Water Works  
**Sewer:** City of Bondurant  
**Telecommunications:** Mi-Fiber