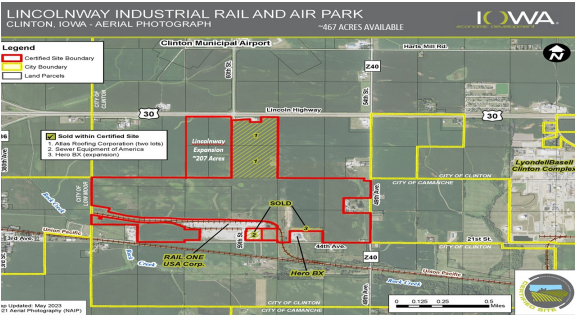


Lincolnway Industrial Rail and Air Park

Highway 30 | Clinton, IA | US | Clinton County
Available Acres: 467 | Sale Price: \$43,560



| | |
|---------------------------|--------------------------|
| Zoning: | Industrial-Heavy |
| Topography: | Rolling |
| Adjacent Available Acres: | 331 |
| Setting: | Industrial Park |
| Within City Limits: | Yes |
| Specialty Features: | Smart Port, TIF District |
| Sale Price: | \$43,560 |
| Sale Price Note: | 43560 |
| Lease Rate Note: | NA |
| Last Updated: | May 9, 2025 |

Site Certification Information

Certified Site Status: Yes
Certified Site: [Iowa Site Certification Program](#)
(Quest Site Solutions)

Economic Development Contact

Andy Sokolovich
Clinton Regional Development Corp.
721 South 2nd Street
Clinton, IA 52732
(563) 242-4536 |
asokolovich@clintondevelopment.com

Jenelle Wolber
Quad Cities Chamber of Commerce
331 West Third Street
Davenport, IA 52801
(563) 823-2679 | jwolber@quadcitieschamber.com

Property and Area Description

The Lincolnway Industrial Rail & Air Park is a developing Rail Park on the west side of Clinton, IA. The park is located adjacent to US Highway 30 and the Clinton Regional Airport. The Union Pacific East-West Mainline runs to the south, with a dedicated spur running into the park. Targeted industries for the Clinton Region include chemicals processing, metal fabrication, and value-added agriculture. There are very few heavy industrial sites in the upper Midwest that offer the logistics capabilities of the Greater Clinton Region and the Lincolnway Rail Park. Site Certification was recertified in 2023. Additional acreage have been acquired through Iowa Land & Building to expand footprint of the park by over 300 acres. **Potential discounted price per acre based on investment and jobs created.

Population

| | | | |
|--|---------------------------------|----------------------------------|----------------------------------|
| | 39,151 10 Mile Radius | 138,822 20 Mile Radius | 414,446 30 Mile Radius |
|--|---------------------------------|----------------------------------|----------------------------------|

Source: ESRI®, 2024

Households

| | | | |
|--|---------------------------------|---------------------------------|----------------------------------|
| | 16,826 10 Mile Radius | 56,028 20 Mile Radius | 175,121 30 Mile Radius |
|--|---------------------------------|---------------------------------|----------------------------------|

Source: ESRI®, 2024

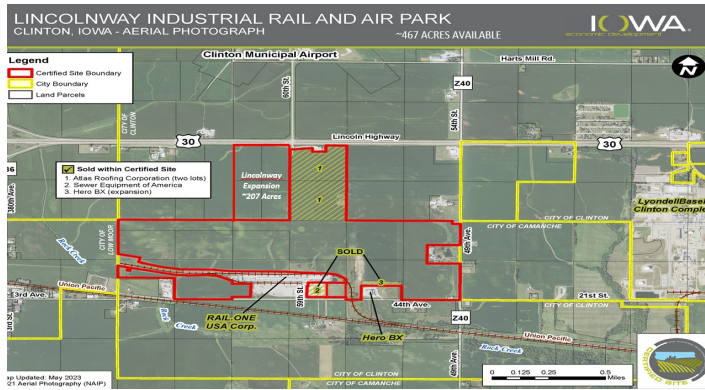
Transportation

Nearest Highway: Hwy 30 (0.10 mi.)
Nearest Interstate: Interstate 80 (29.20 mi.)
Nearest Airport: Clinton Municipal Airport (1.00 mi.)
Nearest Commercial Airport: Quad Cities International Airport (MLI) (35.00 mi.)
Rail Served: Yes
Rail Served By: Union Pacific Railroad
Rail Type: Greenfield
Rail Accessible: Yes
Rail Infrastructure in Place: Yes
Rail Contact: Darren Wisniski
Rail Contact Phone: 402-672-1983
Rail Contact Email: djwisnis@up.com
Barge Access Depth of Channel: 9.00 ft.

Utilities

Electric: Alliant Energy and Eastern Iowa Light & Power
Natural Gas: Alliant Energy
Water: Iowa American Water
Sewer: City of Clinton, IA

Property Images



Nick Peterson | Strategic Partnerships Manager | Alliant Energy
3800 University Blvd. | Ames, IA 50010 | (515) 268-3411 | nickpeterson@alliantenergy.com