



Zoning:	Commercial
Topography:	Flat
Setting:	Mixed-Use Business Park
Within City Limits:	Yes
Sale Price:	\$12
Sale Price Note:	\$12.00 per SF
Last Updated:	May 5, 2025

Economic Development Contact

Mark Seckman  
Marion Economic Development Corporation  
1107 7th Avenue, Suite 201  
Marion, IA 52302  
(319) 743-4729 | mark@medcoiowa.org

Realtor/Owner Contact

Jaymon T. Hajos  
(715) 876-2157 | jhajos@menard-inc.com

Property and Area Description

The site has excellent access and visibility with it's location on Hwy 100. Four-lane highways 100, 13 and 151 provides quick access to the Marion/Cedar Rapids metro area and the nation's interstate highway system. Trucks can easily negotiate to this site. 230,967 square feet. Can be sub-divided. Adjacent land available.

Population

	208,124 10 Mile Radius	287,293 20 Mile Radius	449,261 30 Mile Radius
--	---------------------------	---------------------------	---------------------------

Source: ESRI®, 2024

Households

	87,452 10 Mile Radius	117,567 20 Mile Radius	184,016 30 Mile Radius
--	--------------------------	---------------------------	---------------------------

Source: ESRI®, 2024

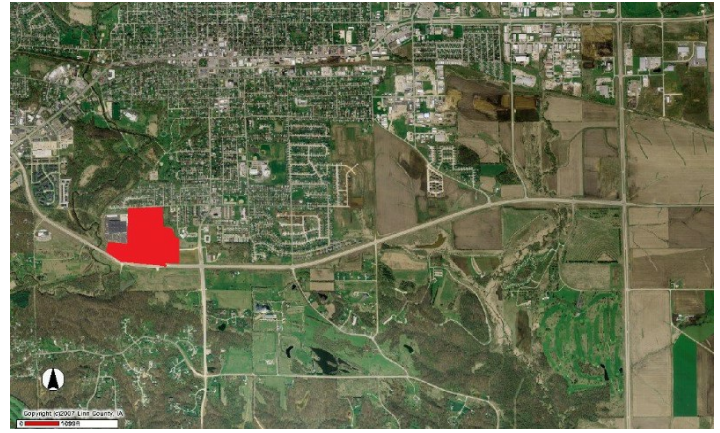
Transportation

Nearest Highway: Highway 100 (0.10 mi.)  
Nearest Interstate: Interstate 380 (8.00 mi.)  
Nearest Airport: Marion Airport (4.00 mi.)  
Nearest Commercial Airport: The Eastern Iowa Airport (18.00 mi.)  
Rail Served: No  
Rail Served By: Other  
Rail Infrastructure in Place: No

Utilities

Electric: Alliant Energy  
Natural Gas: Mid American Energy Company  
Water: Marion Water Department  
Sewer: City of Marion

## Property Images



Mark Seckman | President | Marion Economic Development Corp. MEDCO  
1107 7th Avenue, Suite 201 | Marion, Iowa 52302 | (319) 743-4729 | [mark@medcoiowa.org](mailto:mark@medcoiowa.org)