

Zoning:	Commercial
Setting:	Office Park
Within City Limits:	Yes
Site Dimensions:	189,050.4
Specialty Features:	Data Center, TIF District
Sale Price:	\$3
Sale Price Note:	\$3 sf
Lease Terms:	Negotiable
Last Updated:	Jun 28, 2022

Economic Development Contact

Mark Seckman
Marion Economic Development Corporation
1107 7th Avenue, Suite 201
Marion, IA 52302
(319) 743-4729 | mark@medcoiowa.org


Realtor/Owner Contact

Hannah Kustes
(319) 363-0709

Property and Area Description


Lots available beginning 2022. Part of the Marion Aircom Park located immediately east of the Marion Municipal Airport. Sites range in size 1.09 to 14.71 acres. Sites can be combined to fit your specific project needs.

Population

	168,037 10 Mile Radius	271,831 20 Mile Radius	451,249 30 Mile Radius
---	----------------------------------	----------------------------------	----------------------------------

Source: ESRI®, 2024

Households

	70,858 10 Mile Radius	111,462 20 Mile Radius	184,796 30 Mile Radius
---	---------------------------------	----------------------------------	----------------------------------

Source: ESRI®, 2024

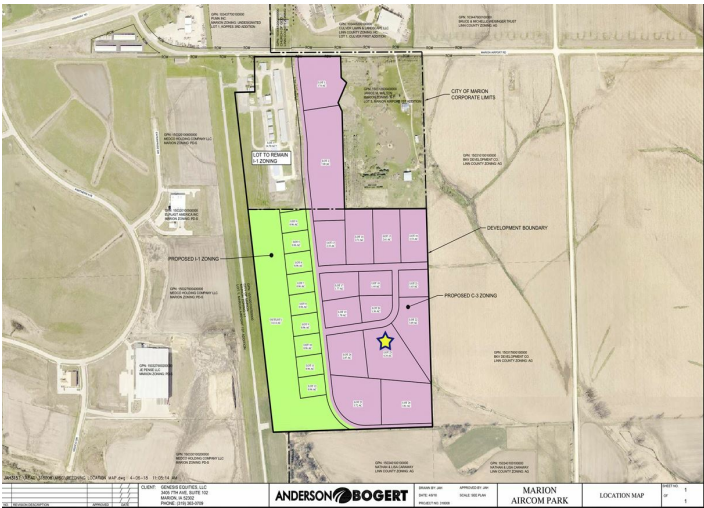
Transportation

Nearest Airport: Marion Municipal Airport
Distance to Mass Transit: .5
Rail Served: No
Rail Served By: Unknown
Rail Accessible: No
Rail Infrastructure in Place: No

Utilities

Electric: Linn County REC
Natural Gas: MidAmerican Energy
Water: Marion Water Department
Sewer: Marion Water Department

Property Images



Mark Seckman | President | Marion Economic Development Corp. MEDCO
1107 7th Avenue, Suite 201 | Marion, Iowa 52302 | (319) 743-4729 | mark@medcoiowa.org