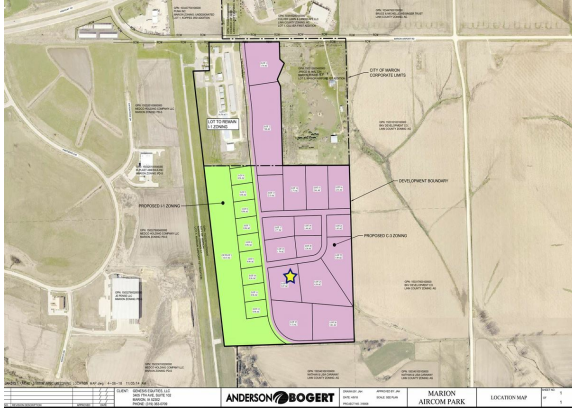


Marion Aircom Park: Lot 24

1700 Marion Airport Road | Marion, IA | US | Linn County

Available Acres: 2.87 | Lease Terms: Negotiable | Sale Price: \$3



Zoning:	Commercial
Setting:	Office Park
Within City Limits:	Yes
Site Dimensions:	125,017.2
Specialty Features:	Data Center, TIF District
Sale Price:	\$3
Sale Price Note:	\$3 sf
Lease Terms:	Negotiable
Last Updated:	Jun 28, 2022

Economic Development Contact

Mark Seckman
Marion Economic Development Corporation
1107 7th Avenue, Suite 201
Marion, IA 52302
(319) 743-4729 | mark@medcoiowa.org

Realtor/Owner Contact

Hannah Kustes
(319) 363-0709

Property and Area Description

Lots available beginning summer 2018. Part of the Marion Aircom Park located immediately east of the Marion Municipal Airport. Sites range in size 1.36 to 4.34 acres. Sites can be combined to fit your specific project needs.

Population



163,879

10 Mile Radius

270,021

20 Mile Radius

448,912

30 Mile Radius

Source: ESRI®, 2024

Households



68,856

10 Mile Radius

110,494

20 Mile Radius

183,873

30 Mile Radius

Source: ESRI®, 2024

Transportation

Nearest Airport: Marion Municipal Airport

Distance to Mass Transit: .5

Rail Served: No

Rail Served By: Unknown

Rail Accessible: No

Rail Infrastructure in Place: No

Utilities

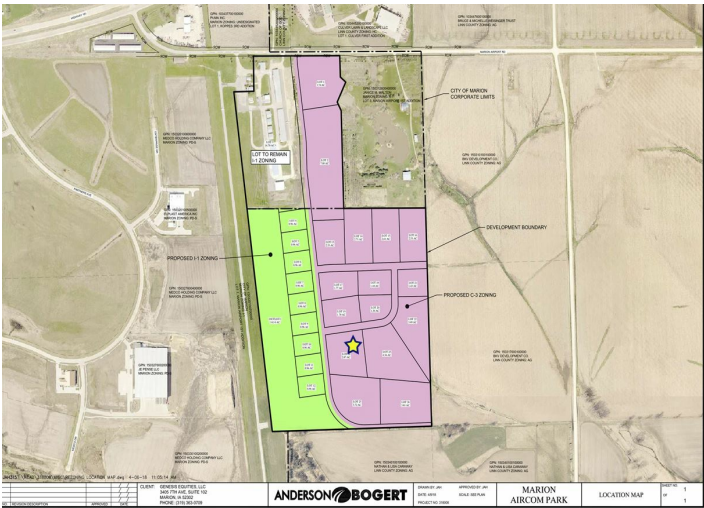
Electric: Linn County REC

Natural Gas: MidAmerican Energy

Water: Marion Water Department

Sewer: Marion Water Department

Property Images



Mark Seckman | President | Marion Economic Development Corp. MEDCO
1107 7th Avenue, Suite 201 | Marion, Iowa 52302 | (319) 743-4729 | mark@medcoiowa.org