

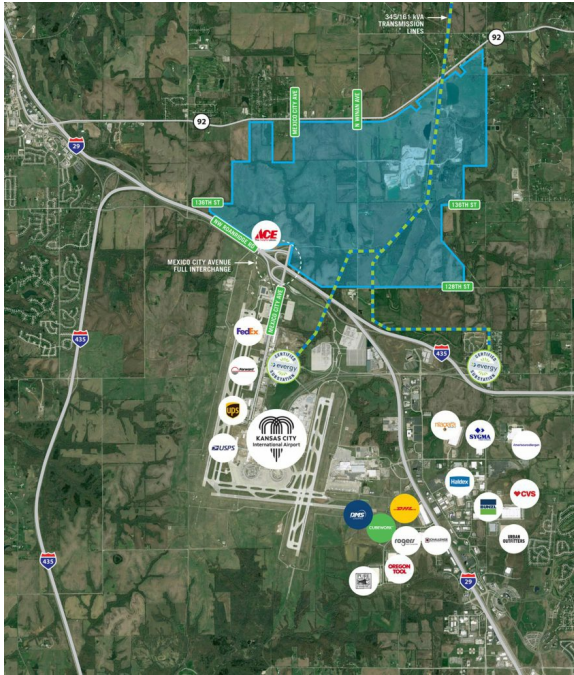
## KCI 29 Logistics Park

I-29/I-435 & Mexico City Ave | Kansas City, MO | US | Platte County

Available Acres: 3,300 |



Missouri Department of  
**Economic Development**



## Property and Area Description

KCI 29 Logistics Park is the largest shovel-ready industrial megasite in Missouri with 3,300 contiguous acres under single ownership that can support up to 20 million square feet of industrial space. The development is poised to become the premier site in Missouri's toolbox for large regional, national and international users with direct access to the new Kansas City International Airport terminal, KCI Air Cargo Hub, and Interstates 29 and 435 in a central U.S. location that offers companies the ability to reach 90% of the continental U.S. in two days via ground transportation or overnight via air freight through carriers such as FedEx, UPS, USPS, and Amazon Prime Air. KCI 29 Logistics Park offers flexibility to meet multiple tenant's unique demands through build-to-suit, land sale, and building lease opportunities. The site offers unparalleled speed-to-market with transmission-level power onsite, existing infrastructure and utility capacity, expedited permitting, tax certainty, and a strong labor pool to allow for accelerated building delivery.

## Population



**155,893**

10 Mile Radius

**687,794**

20 Mile Radius

**1,553,239**

30 Mile Radius

Source: ESRI®, 2024

## Households



**62,245**

10 Mile Radius

**273,720**

20 Mile Radius

**643,286**

30 Mile Radius

Source: ESRI®, 2024

### Zoning:

Industrial-Light,  
Industrial-Heavy,  
Manufacturing, Planned  
Business Park

### Setting:

Agricultural Land

### Within City Limits:

Yes

### Sale Price Note:

Built-To-Suit

### Last Updated:

Nov 2, 2023

## Economic Development Contact

### Tina Chace

Platte County Economic Development Council  
11724 NW Plaza Circle  
Kansas City, MO 64153  
(816) 582-3528 | [tchace@plattecountyedc.com](mailto:tchace@plattecountyedc.com)

### Cathleen Flournoy

Missouri Partnership  
1100 Main Street, 4th Floor  
Kansas City, MO 64105  
(816) 392-5082 |  
[cathleen@missouripartnership.com](mailto:cathleen@missouripartnership.com)

## Realtor/Owner Contact

### Ryan Tompkins

Hunt Midwest  
816.392.5082 | [rtompkins@huntmidwest.com](mailto:rtompkins@huntmidwest.com)

## Transportation

**Nearest Highway:** Missouri Route 92

**Nearest Interstate:** I-29 (Direct Access mi.)

**Ingress/Egress Notes:** Site is currently accessible via the full interchange at I-29 and Mexico City Avenue.

**Nearest Airport:** Charles B. Wheeler Downtown Airport (MKC) (20 mi.)

**Nearest Commercial Airport:** Kansas City International Airport (MCI) (0.1 mi.)

**Rail Served:** No

**Rail Served By:** None

**Rail Accessible:** No

**Rail Infrastructure in Place:** No

## Utilities

**Electric:** Evergy

**Natural Gas:** Spire

**Water:** KC Water

**Sewer:** KC Water

Property Images

