



Zoning:	
Sale Price:	\$1,361,250
Last Updated:	Aug 1, 2025

Economic Development Contact

Tina Chace
Platte County Economic Development Council
11724 NW Plaza Circle, Suite 400
Kansas City, MO 64153
(816) 270-2119 | tchace@plattecountyedc.com

Steven Anthony
EDC of Kansas City, MO
300 Wyandotte St, Suite 400
Kansas City, MO 64105
(816) 691-2117 | santhony@edckc.com

Realtor/Owner Contact

Pat Coppinger

Property and Area Description

The land at SEC E. 63rd Street & Beacon Drive in Kansas City, MO, is located in a well-established area, offering commercial opportunities. The lot provides convenient access to nearby amenities, including schools, parks, and transportation routes. The location offers a blend of urban convenience and residential tranquility, making it a promising spot for future development or expansion.

Population

	705,818 10 Mile Radius	1,793,970 20 Mile Radius	2,077,868 30 Mile Radius
--	----------------------------------	------------------------------------	------------------------------------

Source: ESRI®, 2024

Households

	309,184 10 Mile Radius	733,145 20 Mile Radius	837,423 30 Mile Radius
--	----------------------------------	----------------------------------	----------------------------------

Source: ESRI®, 2024

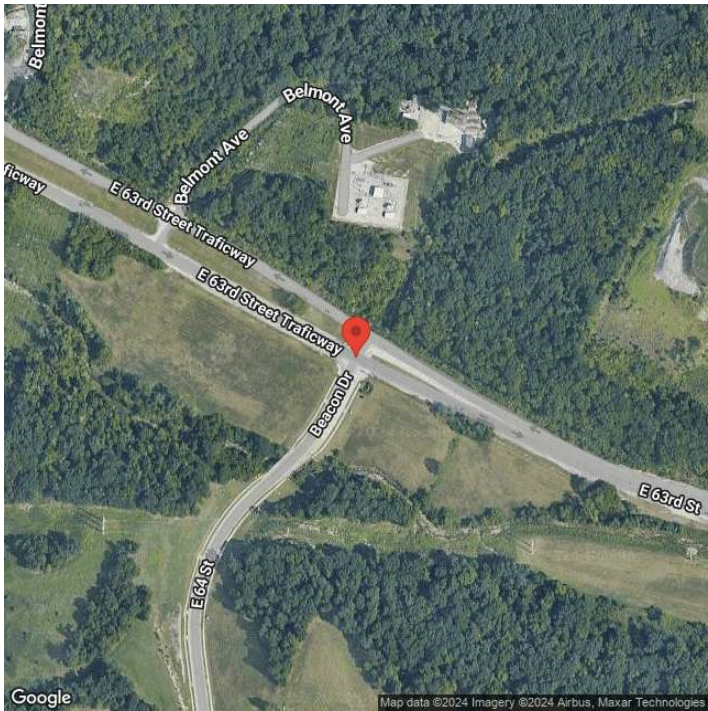
Transportation

Rail Served: No
Rail Accessible: No
Rail Infrastructure in Place: Unknown

Utilities

Electric: Everygy

Property Images



Dan Moye | EDC of Kansas City
300 Wyandotte, Suite 400 | Kansas City , MO 64105 | (816) 691-2134 | dmoye@edckc.com