

152 Highway and Green Hills Road  
Green Hills Rd | Kansas City, MO | US | Platte County  
Available Acres: 26.5 | Sale Price: \$4,500,000



Zoning:	
Sale Price:	\$4,500,000
Last Updated:	Apr 25, 2025

Economic Development Contact

Tina Chace  
Platte County Economic Development Council  
11724 NW Plaza Circle, Suite 400  
Kansas City, MO 64153  
(816) 270-2119 | tchace@plattecountyedc.com

Steven Anthony  
EDC of Kansas City, MO  
300 Wyandotte St, Suite 400  
Kansas City, MO 64105  
(816) 691-2117 | santhony@edckc.com

Realtor/Owner Contact

Whitney Kerr  
| whitney.kerrjr@cushwake.com

Population

	333,614	1,107,014	1,912,973
	10 Mile Radius	20 Mile Radius	30 Mile Radius

Source: ESRI®, 2024

Households

	132,493	452,596	771,056
	10 Mile Radius	20 Mile Radius	30 Mile Radius

Source: ESRI®, 2024

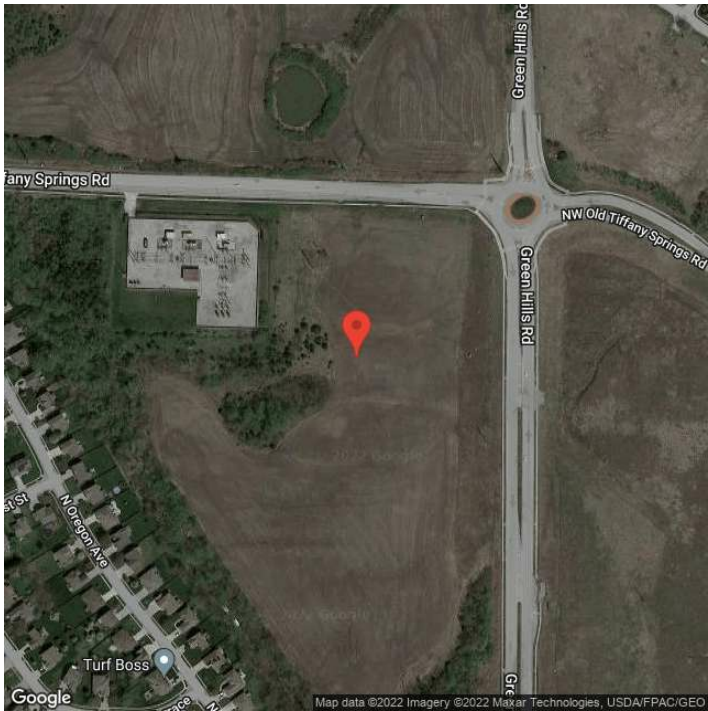
Transportation

Rail Served: No  
Rail Accessible: No  
Rail Infrastructure in Place: Unknown

Utilities

Electric: Ameren, Evergy

Property Images



Dan Moyer | EDC of Kansas City  
300 Wyandotte, Suite 400 | Kansas City , MO 64105 | (816) 691-2134 | dmoyer@edckc.com