

Land for Sale - 68+/- Acres Fronting I-29  
4301 NW 100 St | Kansas City, MO | US | Platte County  
Available Acres: 68 |



Zoning:  
Last Updated: Apr 25, 2025

Economic Development Contact

Tina Chace  
Platte County Economic Development Council  
11724 NW Plaza Circle, Suite 400  
Kansas City, MO 64153  
(816) 270-2119 | tchace@plattecountyedc.com

Steven Anthony  
EDC of Kansas City, MO  
300 Wyandotte St, Suite 400  
Kansas City, MO 64105  
(816) 691-2117 | santhony@edckc.com

Realtor/Owner Contact

Bob Galamba

Property and Area Description

The remaining Tiffany Square Parcels are comprised of 68 acres with frontage on I-29 and bordered by Ambassador Drive and Tiffany Springs Parkway.

Population

	1,249	93,436	295,644
	1 Mile Radius	5 Mile Radius	10 Mile Radius

Source: ESRI®, 2024

Households

	466	38,472	119,098
	1 Mile Radius	5 Mile Radius	10 Mile Radius

Source: ESRI®, 2024

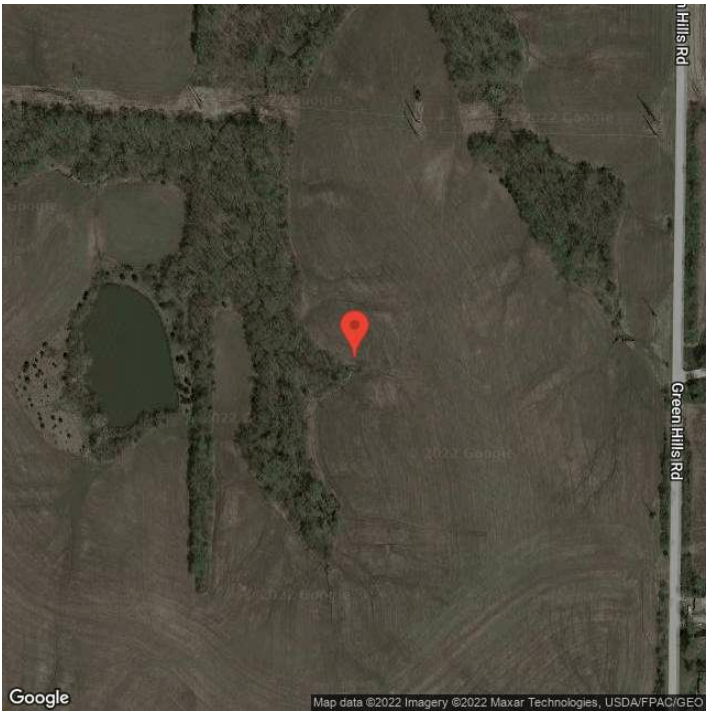
Transportation

Rail Served: No  
Rail Accessible: No  
Rail Infrastructure in Place: Unknown

Utilities

Electric: Evergy

Property Images



Allison Schultz | Marketing & Public Relations Manager | Platte County Economic Development Council  
PO Box 14173 | Kansas City, MO 64152 | (816) 270-2109 | [aschultz@plattecountyedc.com](mailto:aschultz@plattecountyedc.com)