

152 Highway and Green Hills Road
Green Hills Rd | Kansas City, MO | US | Platte County
Available Acres: 26.5 | Sale Price: \$4,500,000



Zoning:	
Sale Price:	\$4,500,000
Last Updated:	Apr 25, 2025

Economic Development Contact

Tina Chace
Platte County Economic Development Council
11724 NW Plaza Circle, Suite 400
Kansas City, MO 64153
(816) 270-2119 | tchace@plattecountyedc.com

Steven Anthony
EDC of Kansas City, MO
300 Wyandotte St, Suite 400
Kansas City, MO 64105
(816) 691-2117 | santhony@edckc.com

Realtor/Owner Contact

Whitney Kerr
| whitney.kerrjr@cushwake.com

Population

	7,880	127,842	333,614
	1 Mile Radius	5 Mile Radius	10 Mile Radius

Source: ESRI®, 2024

Households

	3,229	52,930	132,493
	1 Mile Radius	5 Mile Radius	10 Mile Radius

Source: ESRI®, 2024

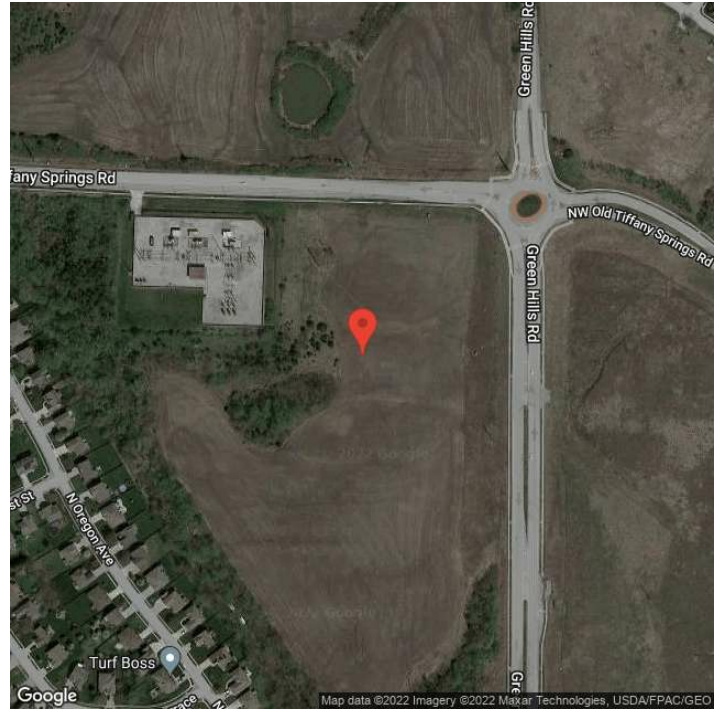
Transportation

Rail Served: No
Rail Accessible: No
Rail Infrastructure in Place: Unknown

Utilities

Electric: Ameren, Evergy

Property Images



Allison Schultz | Marketing & Public Relations Manager | Platte County Economic Development Council
PO Box 14173 | Kansas City, MO 64152 | (816) 270-2109 | aschultz@plattecountyedc.com