

14.61 Acres | 17th Ave & 56th Street - Kearney, NE  
17th Avenue & 56th Street | Kearney, NE | US | Buffalo County  
Available Acres: 14.61 |



### GRAND WEST LAND TRACTS A - C

17TH AND 56TH STREET KEARNEY, NEBRASKA

#### QUICK NOTES

##### TRACT A

SIZE: 5.93 ACRES  
TOTAL SALE PRICE: \$2,195,641.80  
PER ACRE: \$370,260  
PER SQUARE FOOT: \$8.50

##### TRACT B

SIZE: 6.34 ACRES  
TOTAL SALE PRICE: \$2,071,278.00  
PER ACRE: \$326,700  
PER SQUARE FOOT: \$7.50

##### TRACT C

SIZE: 2.34 ACRES  
TOTAL SALE PRICE: \$738,995.40  
PER ACRE: \$315,810  
PER SQUARE FOOT: \$7.25

**PATRICK SLACK**  
308.234.5550  
psl@c21midlands.pro

**BRANDON BENITZ**  
308.224.9527  
brandon@c21midlands.pro

Zoning:	Commercial, Industrial, Mixed Use, Retail
Setting:	Mixed-Use Business Park
Within City Limits:	Yes
Site Dimensions:	3 different lots - lot size varies
Sale Price Note:	Price will be determined by a survey of all tracts and sold on a per-square foot basis.
Last Updated:	Jun 10, 2025

Economic Development Contact

Trevor Lee  
Development Council for Buffalo County  
220 11th Avenue  
Kearney , NE 68845  
(308) 237-9346 | trevor@growbuffalocounty.com

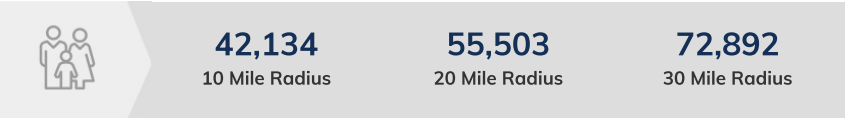
Realtor/Owner Contact

Brandon Benitz  
Century 21 Midlands  
308-224-9527 | brandon@c21midlands.pro

Property and Area Description

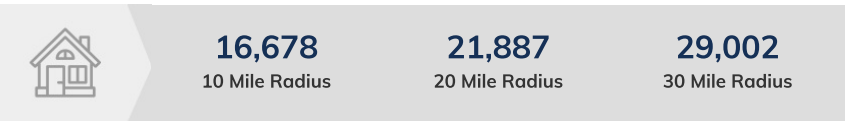
Grand West Land Tracts A-C. Prime development land that’s well-located for commercial use! Three tracts of varying sizes in the same adjoining location in a fast-growing area of Kearney. Utilities surround these tracts and streets are brand new. Seller will pay for a final survey to determine exact square footage, with final pricing determined by psf.

Population



Source: ESRI®, 2024

Households



Source: ESRI®, 2024

Transportation

**Nearest Highway:** Highway 30 (2.8 mi.)  
**Nearest Interstate:** Interstate 80 (5.7 mi.)  
**Nearest Airport:** Kearney Regional Airport (4.7 mi.)  
**Nearest Commercial Airport:** Kearney Regional Airport (4.7 mi.)  
**Distance to Mass Transit:** 0; R.Y.D.E is an on-call service that will pick up/drop off  
**Rail Served:** No  
**Rail Served By:** Unknown, None  
**Rail Accessible:** No  
**Rail Infrastructure in Place:** No  
**Rail Contact:** n/a  
**Rail Contact Phone:** n/a  
**Rail Contact Email:** n/a  
**Short Line Contact:** n/a  
**Short Line Contact Phone:** n/a  
**Short Line Contact Email:** n/a

Utilities

**Electric:** Nebraska Public Power District  
**Water:** City of Kearney  
**Sewer:** City of Kearney

## Property Images

## GRAND WEST LAND TRACTS A - C

17TH AND 56TH STREET KEARNEY, NEBRASKA

## QUICK NOTES

## TRACT A

SIZE: 5.93 ACRES

TOTAL SALE PRICE: \$2,195,641.80

PER ACRE: \$370,260

PER SQUARE FOOT: \$8.50

## TRACT B

SIZE: 6.34 ACRES

TOTAL SALE PRICE: \$2,071,278.00

PER ACRE: \$326,700

PER SQUARE FOOT: \$7.50

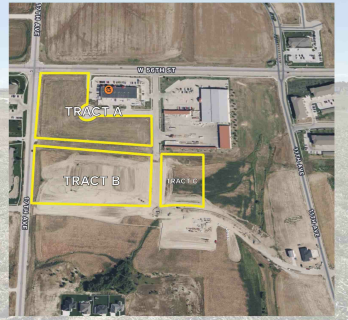
## TRACT C

SIZE: 2.34 ACRES

TOTAL SALE PRICE: \$738,995.40

PER ACRE: \$315,810

PER SQUARE FOOT: \$7.25



**PATRICK SLACK**  
308.234.5550  
pat@c21midlands.pro



**BRANDON BENITZ**  
308.224.9527  
brandon@c21midlands.pro



**COMMERCIAL.**