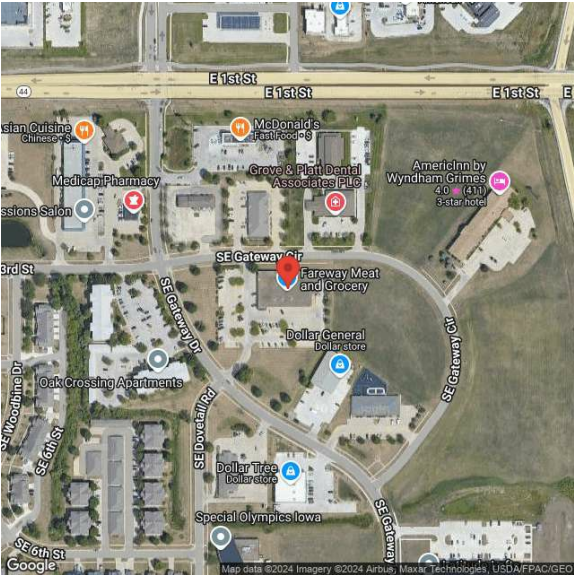


351 SE Gateway Dr
351 SE Gateway Dr | Grimes, IA | US | Polk County
Available Acres: 3.65 | Sale Price: \$1,112,958



Zoning:	
Sale Price:	\$1,112,958
Last Updated:	Dec 5, 2024

Economic Development Contact

Brian W. Buethe
Grimes Chamber & Economic Development
404 SE 2nd Street, Suite 200
Grimes, Iowa 50111
(515) 986-5770 | brianb@grimesiowa.com

Sid Juwarker, VP of Economic Development
Greater Des Moines Partnership
700 Locust Street, Suite 100
Des Moines, Iowa 50309
(515) 286-4964 | sjuwarker@dsmpartnership.com

Realtor/Owner Contact

Bill Wright
| bill.wright2@cbre.com

Property and Area Description

3.65 acres of commercial development land available for sale in the booming suburb of Grimes, Iowa. The parcel has direct frontage to Highway 141, a major thoroughfare through Des Moines northwest suburbs, and also just south of the major east/west arterial through Grimes commercial district (E 1st Street - Highway 44).

Population

	386,900 10 Mile Radius	663,420 20 Mile Radius	826,898 30 Mile Radius
--	----------------------------------	----------------------------------	----------------------------------

Source: ESRI®, 2024

Households

	156,176 10 Mile Radius	265,382 20 Mile Radius	329,847 30 Mile Radius
--	----------------------------------	----------------------------------	----------------------------------

Source: ESRI®, 2024

Transportation

Rail Served: No
Rail Accessible: No
Rail Infrastructure in Place: Unknown