

800 - 802 E. 23rd Street
800 East 23rd St S | Independence, MO | US | Jackson County
Available Acres: 0.34 |



Zoning:
Last Updated: May 16, 2025

Economic Development Contact
Jarvis Sackman, Director of Business Retention & Expansion
Independence EDC
210 W. Truman
Independence, MO 64050
(816) 463-3512 | jarvis@ichamber.biz

Realtor/Owner Contact
Bob Jaekel
| bjaekel@blockandco.com

Property and Area Description

14,800 SF lot - FOR SALE Corner lot with good access Existing sign board income Great for Drive-thru Coffee Shop Build-to-suit possible Over 28,200 cars per day

Population



Source: ESRI®, 2024

Households

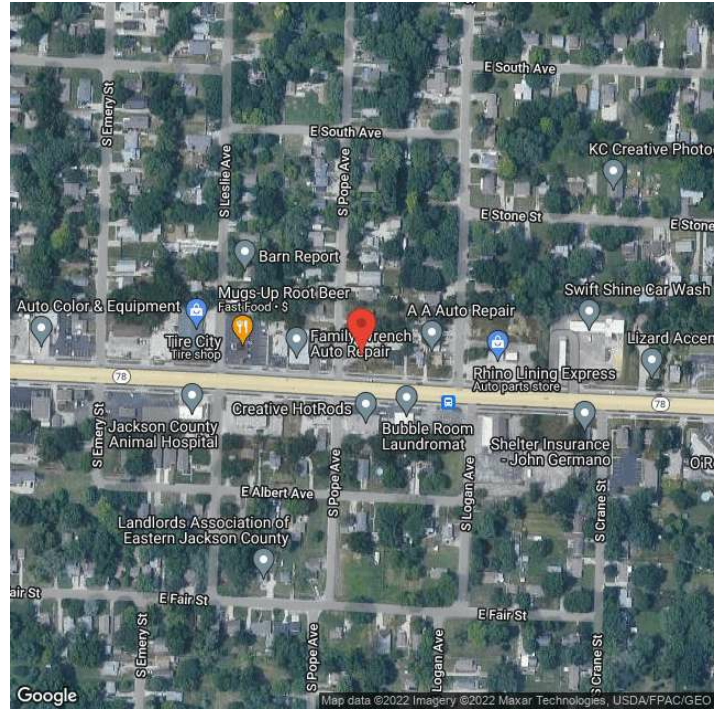


Source: ESRI®, 2024

Transportation

Rail Served: No
Rail Accessible: No
Rail Infrastructure in Place: Unknown

Property Images



Tom Lesnak | President | Independence EDP
| Independence, MO 64050 | (816) 463-3510 | Tom@iChamber.biz