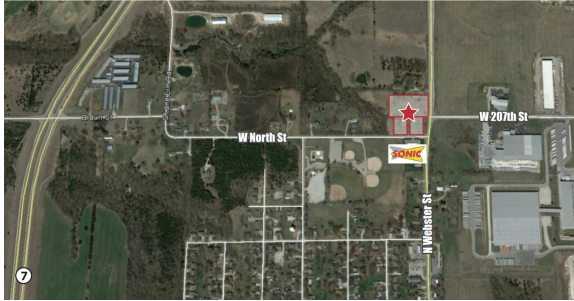


## 207th & N Webster Street

207th & N Webster Street | Spring Hill, KS | US | Johnson County

Available Acres: 2.85 | Sale Price: \$150,000



### Property and Area Description

Great corner location on N Webster. 3 lots - 29,360 SF, 29,530 SQFT, & 1.7 Acres. 132,942 SF total, 2.85 acres. SE lot - C-2 Zone, SW lot & N lot - Residential. All 3 lots have commercial zoning potential.

### Population



**405,052**

15 Mile Radius

**753,393**

20 Mile Radius

**1,573,965**

30 Mile Radius

Source: ESRI®, 2024

### Households



**151,875**

15 Mile Radius

**297,398**

20 Mile Radius

**634,837**

30 Mile Radius

Source: ESRI®, 2024

<b>Zoning:</b>	Commercial, Residential
<b>Topography:</b>	Unknown
<b>Setting:</b>	Unknown
<b>Within City Limits:</b>	Yes
<b>Site Dimensions:</b>	132942 SQFT
<b>Sale Price:</b>	\$150,000
<b>Last Updated:</b>	Jul 13, 2021

### Economic Development Contact

#### Amy Long

City of Spring Hill

P.O. Box 424

Spring Hill, KS 66083

(913) 592-3664 | [planning@springhillks.gov](mailto:planning@springhillks.gov)

#### Janet McRae

Miami County Economic Development

201 South Pearl, Suite 202

Paola, KS 66071

(913) 294-4045 | [jmcrac@miamicountyks.org](mailto:jmcrac@miamicountyks.org)

### Realtor/Owner Contact

#### Jim Thome

Reece Commercial Real Estate

913-548-8700 | [jthome@reececommercial.com](mailto:jthome@reececommercial.com)

### Transportation

**Nearest Highway:** US 169 Highway (0.8 mi.)

**Nearest Interstate:** I-35 (7.3 mi.)

**Nearest Airport:** New Century AirCenter (9.9 mi.)

**Nearest Commercial Airport:** Kansas City International Airport (47.6 mi.)

**Rail Served:** No

**Rail Served By:** None

**Rail Accessible:** Unknown

**Rail Infrastructure in Place:** No

### Utilities

**Electric:** Evergy

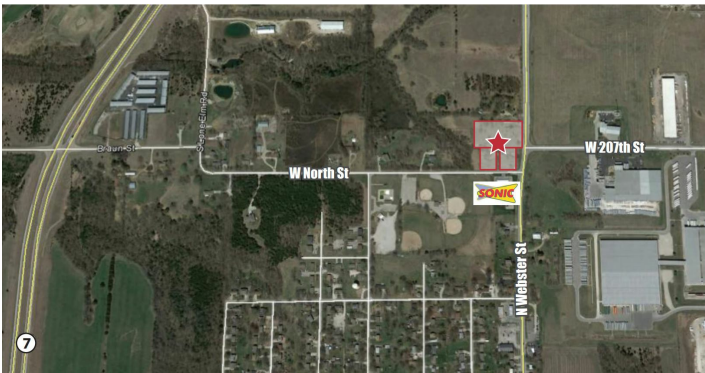
**Natural Gas:** Atmos Energy

**Water:** City of Spring Hill, Kansas

**Sewer:** City of Spring Hill, Kansas

**Telecommunications:** CenturyLink

# Property Images



Janet McRae | Economic Development Director | Miami County Economic Development  
201 S Pearl, Suite 202 | Paola, KS 66071 | (913) 294-4045 | [jmcrae@miamicountyks.org](mailto:jmcrae@miamicountyks.org)