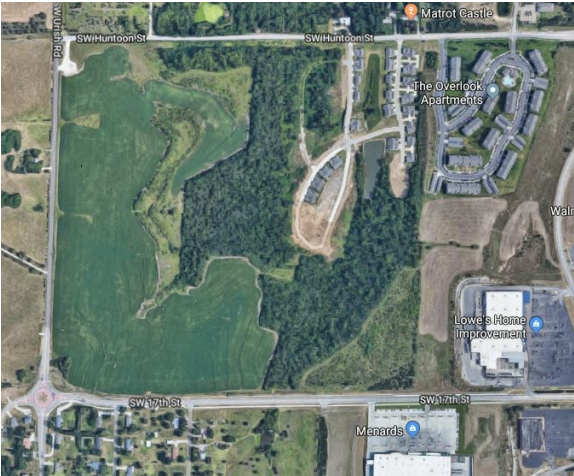


Wrangler Ridge - Lot 3, Block A
NE Corner of 17th St and Urish Rd | Topeka, KS | US | Shawnee County
Available Acres: 19.24 | Sale Price: \$1,300,000



Zoning:	Mixed Use
Within City Limits:	Yes
Sale Price:	\$1,300,000
Last Updated:	Jun 1, 2021

Economic Development Contact

Molly Howey
GO Topeka
120 SE Sixth Avenue
Topeka, KS 66603
(785) 234-2644 | mhowey@gotopeka.com

Realtor/Owner Contact

Diane Elliott
Broker
(785) 230-2999 | topekahomefinder@aol.com

Property and Area Description

Lot 3, Block A, Zoned: M-2, Lot Size: 19.24 acres, Price: \$1,300,000

Population

	162,461	197,256	315,676
	10 Mile Radius	20 Mile Radius	30 Mile Radius

Source: ESRI®, 2024

Households

	68,345	81,457	131,628
	10 Mile Radius	20 Mile Radius	30 Mile Radius

Source: ESRI®, 2024

Transportation

Nearest Highway: Highway 75
Nearest Interstate: I-470
Rail Served: Unknown
Rail Served By: Unknown
Rail Accessible: Unknown
Rail Infrastructure in Place: Unknown