

## NEC of 126th St & State Ave

NEC of 126th St & State Ave | Kansas City, KS | US | Wyandotte County

Available Acres: 145 | Sale Price: \$10,916,741



## Property and Area Description

144.65+ acres N & E of 126th Street and State Avenue. Residential, Multi-Family, Retail/Commercial, Office are ideal uses. Just west of the future home of the American Royal and minutes from The Kansas Speedway, Legends, Sporting KC, and much more. Kansas City, Kansas and Wyandotte County have witnessed a tremendous surge of activity this decade. The Kansas Speedway, Nebraska Furniture Mart, Great Wolf Lodge, and The Legends Shopping Center have attracted millions of shoppers and fans, bringing with them the need for new housing, offices, and support services. Highlights: 144.65+ acres for single family, multi-family, retail, office Less than one mile from the Kansas Speedway, The Legends, Hollywood Casino, Cerner, Nebraska Furniture Mart and more Quick, easy access to I-70, I-435 and K-7 Highway Access from State Ave and 126th St Located in the Bonner Springs/Edwardsville School District The future home of the American Royal is just east of the property

## Utilities

<b>Zoning:</b>	Residential, Commercial
<b>Within City Limits:</b>	Yes
<b>Sale Price:</b>	\$10,916,741
<b>Last Updated:</b>	Mar 3, 2021

## Economic Development Contact

**Greg Kindle**

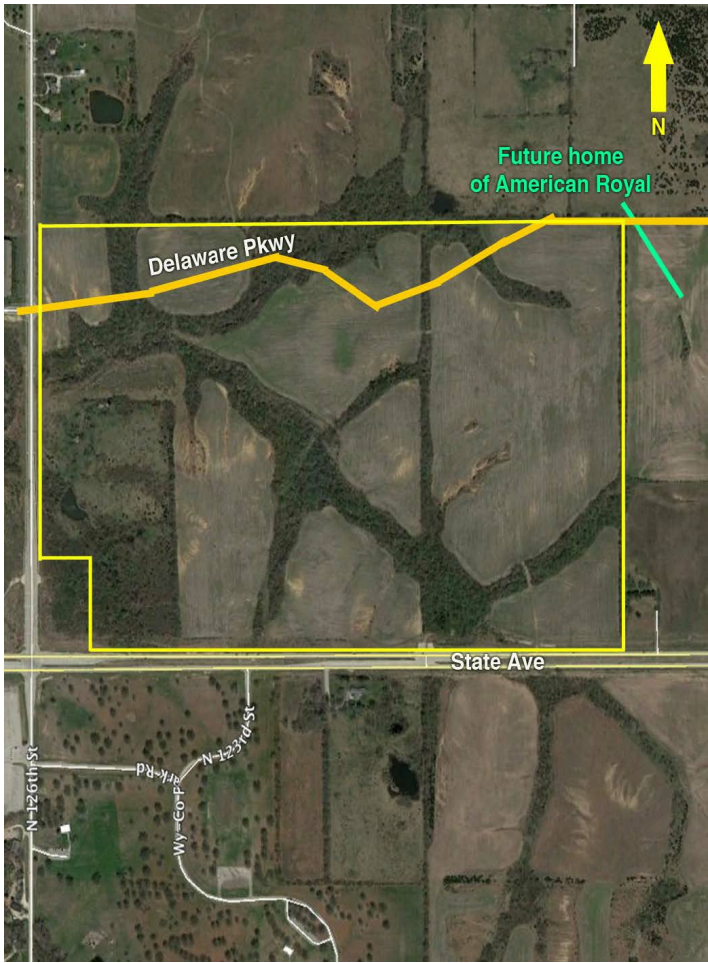
Wyandotte Economic Development Council  
727 Minnesota Avenue  
Kansas City, KS 66117  
(913) 371-3198 | gkindle@wyedc.org

## Realtor/Owner Contact

**Kevin Tubbesing, CCIM**

The Land Source  
(913) 562-5608 | kevin@thelandsource.com

Property Images



Greg Kindle | President | Wyandotte Economic Development Council  
727 Minnesota | Kansas City, KS 66117 | (913) 371-3198 | [gkindle@wyedc.org](mailto:gkindle@wyedc.org)