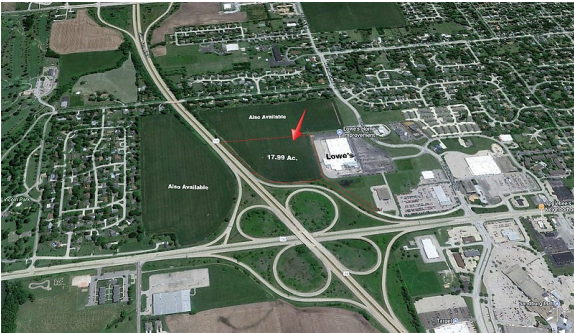


Hwy.34 & 150 North of Lowes - Galesburg IL

Hwy. 34 & 150 | Galesburg, IL | US | Knox County
Available Acres: 17.99 | Lease Terms: None |



Illinois
Department of Commerce
& Economic Opportunity
JB Pritzker, Governor



Zoning:	Commercial
Adjacent Available Acres:	20+
Within City Limits:	Yes
Lease Terms:	None
Last Updated:	Jun 4, 2024

Economic Development Contact

Ken Springer
Knox County Area Partnership for Economic Development
200 East Main Street, Suite 200
Galesburg, IL 61401
(309) 343-1194 | ken@knoxpartnership.com

Realtor/Owner Contact

Jerry Dahl
Jerry Dahl
309-368-5671 | jerry@dahlrealty.com

Property and Area Description

17.99 acres, zoned commercial with visibility from Hwy. 34. Perfect spot for a motel etc Owner will Divide:

Population

	38,484	65,200	114,966
	10 Mile Radius	20 Mile Radius	30 Mile Radius

Source: ESRI®, 2024

Households

	16,578	27,950	49,145
	10 Mile Radius	20 Mile Radius	30 Mile Radius

Source: ESRI®, 2024

Transportation

Nearest Highway: Illinois Highway 41 (6 mi.)
Nearest Interstate: Interstate 34 (1 mi.)
Nearest Airport: Galesburg Municipal Airport (8 mi.)
Nearest Commercial Airport: Quad Cities International Airport (55 mi.)
Rail Served: No
Rail Served By: Unknown
Rail Accessible: No
Rail Infrastructure in Place: No

Utilities

Electric: Ameren
Natural Gas: Ameren
Water: City of Galesburg
Sewer: Galesburg Sanitary District
Telecommunications: Stratus Networks

Dave Pierson | Economic Development Representative | IL Dept. of Commerce and Economic Opportunity
100 W. Randolph St., Suite 3-400 | Chicago, IL 60601 | (312) 814-1346 | david.pierson@illinois.gov