

Zoning:	Industrial-Heavy
Topography:	Level/Nearly Level
Setting:	Industrial Park
Within City Limits:	Yes
Last Updated:	Dec 17, 2024

Economic Development Contact

Jill Kramer
Hancock County EDC
650 West 3rd St
Garner, IA 50438
(641) 923-9921 |
director@hancockcountyiowa.com

Realtor/Owner Contact

Chris Thomason
515-778-8188

Property and Area Description

80 acres located in Garner just north of US Highway 18. Utilities in place for phase I area.

Population

	8,613	40,282	83,190
	10 Mile Radius	20 Mile Radius	30 Mile Radius

Source: ESRI®, 2024

Households

	3,710	17,949	36,339
	10 Mile Radius	20 Mile Radius	30 Mile Radius

Source: ESRI®, 2024

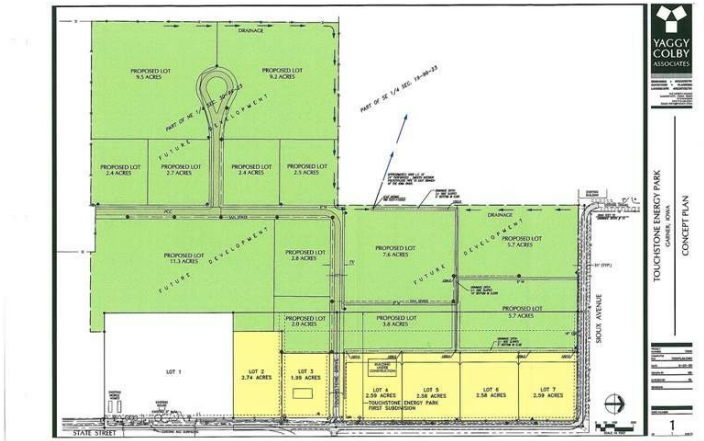
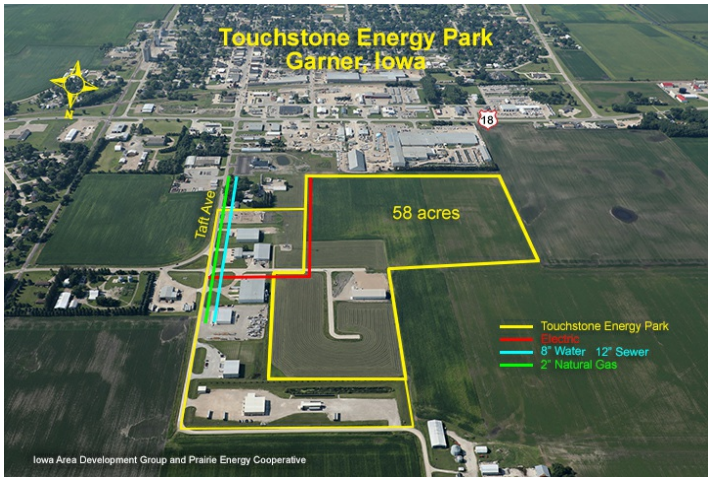
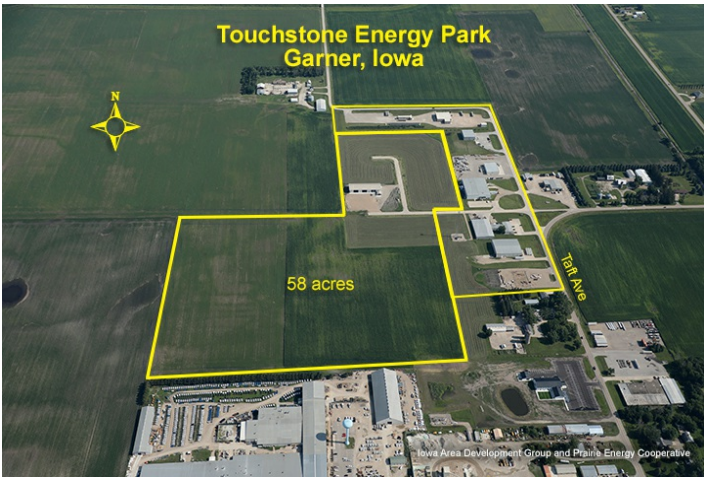
Transportation

Nearest Highway: I-35 (12.00 mi.)
Nearest Interstate: I-35 (12.00 mi.)
Nearest Airport: Mason City Airport (15.00 mi.)
Nearest Commercial Airport: Mason City Municipal Airport (15.00 mi.)
Rail Served: No
Rail Served By: Other
Rail Infrastructure in Place: No

Utilities

Electric: Prairie Energy Cooperative
Natural Gas: Alliant Energy
Water: City of Garner
Sewer: City of Garner

Property Images



Bruce Hansen | V.P. Business Development | Iowa Area Development Group
2600 Grand Avenue, Suite 430 | Des Moines, IA 50312 | (800) 888-4743 | bhansen@iadg.com